



# TASMANIAN STATISTICAL INDICATORS

EMBARGO: 11:30AM (CANBERRA TIME) THURS 8 AUG 2002

## CONTENTS

	<i>page</i>
Notes .....	2
Main features .....	3
List of tables .....	8
SUBJECT AREAS	
1 Population and demography .....	9
2 Labour force .....	10
3 Wages and prices .....	18
4 Production .....	24
5 Primary industry .....	25
6 Building .....	29
7 Finance .....	30
8 Tourism .....	32
9 Transport .....	34
10 Retail trade .....	35
11 Overseas trade .....	36
12 Australia and state comparisons .....	38
13 Tasmanian statistical divisions comparisons .....	40
ADDITIONAL INFORMATION	
Map: Tasmanian statistical divisions .....	42

- For further information about these and related statistics, contact the National Information and Referral Service on 1300 135 070 or Mary Eagle on Hobart 03 6222 5812.

## NOTES

### FORTHCOMING ISSUES

<i>ISSUE</i>	<i>RELEASE DATE</i>
September 2001	10 September 2001
October 2001	10 October 2001
November 2001	11 November 2001
December 2001	10 December 2001
January 2002	10 January 2002
February 2002	10 February 2002

### INTRODUCTION

1 This publication contains latest figures for a comprehensive range of economic indicators. Statistics shown in this publication are the latest available at the date of preparation and may be subject to revision in subsequent issues.

Reference should therefore always be made to the latest issue or to the statistical publication on the specific subject.

### SEASONAL ADJUSTMENT AND TREND ESTIMATION

2 Seasonal adjustment is a means of removing the estimated effects of normal seasonal variation from the series so that the effects of other influences on the series can be more clearly recognised. Seasonal adjustment does not aim to remove the irregular or non-seasonal influences which may be present in any particular month. This means that month-to-month movements of the seasonally adjusted estimates may not be reliable indicators of trend behaviour.

3 The smoothing of seasonally adjusted series reduces the impact of the irregular components of the seasonally adjusted series and creates trend estimates. These trend estimates are derived by applying a 13-term Henderson-weighted moving average to all months except the last six. The last six monthly trend estimates are obtained by applying surrogates of the Henderson average to the seasonally adjusted series.

4 While this smoothing technique enables estimates to be produced for the latest month, it does result in revisions to the most recent months as additional observations become available. Generally, subsequent revisions become smaller and after 3 months have a negligible impact on the series.

5 A number of ABS data series will reflect significant and subsequent impacts of The New Tax System (TNTS), introduced in Australia from 1 July 2000. Further information can be found in Information Paper: ABS Statistics and The New Tax System(cat. no. 1358.0).

Stevan R. Matheson  
Regional Director, Tasmania

## MAIN FEATURES

### THE LABOUR FORCE

Trend estimates There were an estimated 216,000 persons (based on *trend* estimates) in the labour force in June 2002 and an estimated 374,000 civilian Tasmanians aged 15 years or more, yielding a labour force participation rate of 57.8%, compared to 58.4% in June 2001. The Australian labour force participation rate for June 2002 was 63.6%, decreasing from the June 2001 estimate of 63.8% (see table 39 and *Labour Force, Australia, Preliminary* (cat. no. 6202.0)).

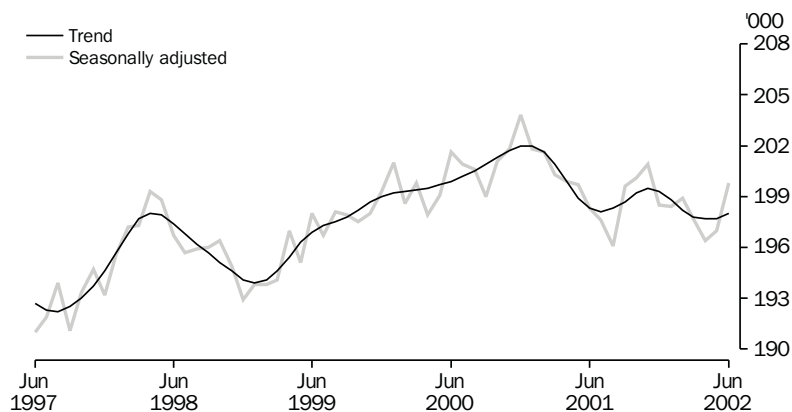
For Tasmanian males, the *trend* estimate of the participation rate was 65.8% in June 2002 compared to 67.2% in June 2001. For Tasmanian females, the *trend* estimate of the participation rate was 50.2% in June 2002, compared to 50.2% in June 2001 (see table 3).

### EMPLOYMENT

#### State comparisons

Trend estimates There was a decrease of 0.2% in the number of Tasmanians employed over the 12 months to June 2002. Employment over the same period increased in New South Wales by 0.9%, Victoria by 1.7%, Queensland by 2.7%, South Australia by 3.0% and Western Australia by 2.3%. The increase in the national employment figure over the same period was 1.7% (see table 39 and *Labour Force, Australia, Preliminary* (cat. no. 6202.0)).

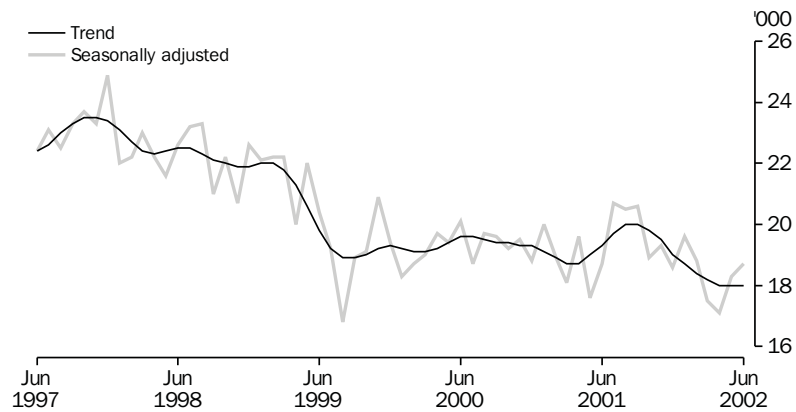
#### EMPLOYMENT, TASMANIA



## UNEMPLOYMENT

Trend estimates The *trend* estimate of the number of unemployed persons in Tasmania for June 2002 was 18,000, compared to 19,300 in June 2001. The *trend* estimate of the unemployment rate for June 2002 was 8.3% compared to 8.9% in June 2001. The Australian *trend* estimate of the unemployment rate was 6.3% in June 2002 compared to 6.8% in June 2001 (see table 3 and 39, and *Labour Force, Australia, Preliminary* (cat. no. 6202.0)).

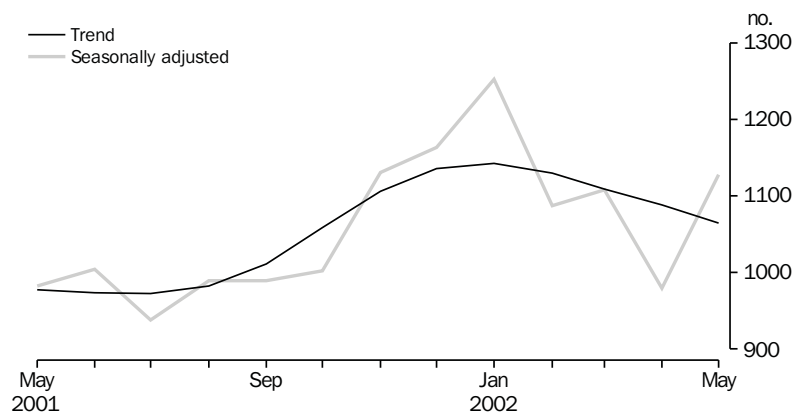
### UNEMPLOYMENT, TASMANIA



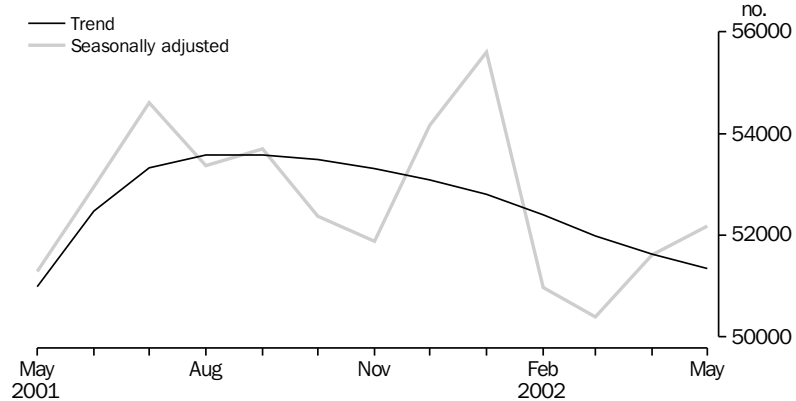
## HOUSING FINANCE

Trend estimates The latest *trend* series for the number of housing finance commitments in Tasmania shows a 2.1% decrease between April and May 2002. The *trend* series shows an overall increase of 8.9% between May 2001 and May 2002. The national *trend* series shows an increase of 0.7% from May 2001 to May 2002 with a decrease of 0.5% between April 2002 and May 2002.

### HOUSING FINANCE, TASMANIA, Number of Dwellings



HOUSING FINANCE AUSTRALIA, Number of dwellings



The latest *trend* series for the total value of commitments for Tasmania shows a 1.1% decrease between April and May 2002. The *trend* series showed an increase of 20.8% from May 2001 to May 2002. The national *trend* series shows the total value of commitments having increased by 0.2% between April 2002 and May 2002 with an increase of 11.4% between May 2001 and May 2002. (see table 28 and *Housing Finance for Owner Occupation, Australia* (cat. no. 5609.0)).

BUILDING APPROVALS

Original terms There were 165 dwelling units approved during May 2002, including 161 new houses. This compares to 165 dwelling units approved during April 2002. The number of dwelling units approved increased from the 134 approvals recorded in May 2001. The number of dwelling units approved in the 12 months to May 2002 (2,016) rose 73.3% from those approved in the 12 months to May 2001 (1,163).

At current prices, the value of total building was \$36.0m in May 2002, 30.9% above the April 2002 figure of \$27.5m and 21.1% below the May 2001 figure of \$45.6m. Residential building contributed \$24.4m and non-residential building \$11.6m in May 2002 (see table 27 and *Building Approvals, Australia* (cat. no. 8731.0)).

SALES OF NEW MOTOR VEHICLES

Trend estimates In *trend* terms, the number of New Motor Vehicles sold increased from 1,271 in May 2002 to 1,275 in June 2002. In *trend* terms, the number of New Motor Vehicles sold increased by 16.0% from the June 2001 figure of 1,099. Nationally, the *trend* estimate of New Motor Vehicles sold in June 2002 was 67,887, an increase of 7.5% from the June 2001 figure of 63,172. Passenger vehicles represented 61.4% of all new vehicles registered in Tasmania in June 2002.

These statistics replace the New Motor Vehicle Registrations collection. They are based on VFACTS series produced by the Federal Chamber of Automotive Industries. VFACTS reports the numbers of new motor vehicle sales by dealers and direct sales by manufacturers throughout Australia. (see table 34 and 9314.0 *Sales of New Motor Vehicles* (cat no. 9314 Available as Electronic Publication Only)).

## RETAIL

Trend estimates In *trend* terms, the estimate of retail turnover in Australia for May 2002 was \$14,475.6m, a 7.8% increase from the May 2001 estimate of \$13,424.9m. In *trend* terms, the estimate of retail turnover in Tasmania for May 2002 was \$309.4m, 6.1% above the figure recorded in May 2001 (\$291.5m). (see table 35 and *Retail Trade, Australia* (cat. no. 8501.0)).

## LIVESTOCK SLAUGHTERING

Trend estimates Monthly movements of *trend* estimates showed increases in the three livestock slaughtering series, with cattle and calves up by 2.9%, sheep and lambs up by 7.1% and pigs up by 0.4%.

In May 2002, the *trend* estimate for the number of cattle and calves slaughtered was 16,600. This was down by 8.0% on the estimate for May 2001 and down by 22.5% on the estimate for May 2000.

The *trend* estimate for the number of sheep and lambs slaughtered was 55,900, down by 3.6% on the estimate for May 2001 and down by 36.1% on the estimate for May 2000.

The *trend* estimate for the number of pigs slaughtered was 4,190, a decrease of 10.2% on the estimate for May 2001 and a decrease of 19.9% on May 2000. (See table 21).

## OVERSEAS TRADE

The value of Tasmania's exports for the month of May 2002 was \$194 million, a decrease of 29% on the month of April 2002. Australia's exports for May 2002 totalled \$10,045 million, an increase of 3% on the previous month.

Tasmania's major export destinations for the month of May 2002 were Japan (\$46.1 million), Hong Kong (\$26.9 million) and United States of America (\$25.3 million). Major commodity groups exported for the month were non-ferrous metals (\$60.2 million) and metalliferous ores and scrap (\$20.6 million).

## ESTABLISHED HOUSE PRICE INDEX

The Established House Price Index for Hobart increased by 2.7% in the March quarter 2002. The largest increase for the March quarter was in Brisbane (7.9%) followed by Adelaide (4.7%). In the year to March 2002, Hobart's index rose 6.2%, the second lowest of all capitals. The largest annual increases occurred in Sydney (20.0%) and Melbourne (18.3%).

## CONSUMER PRICE INDEX

The Consumer Price Index (All groups) for Hobart increased by 1.0% in the March quarter of 2002. For the weighted average of the eight capital cities, the index rose 0.9% for the March quarter. The highest increases for the quarter were recorded by Sydney, Brisbane and Hobart (all 1.0%).



## LIST OF TABLES

<b>1</b>	Population	9
<b>2</b>	Births, deaths and marriages	9
<b>3</b>	Labour force status, seasonally adjusted and trend	10
<b>4</b>	Labour force status by region, males	11
<b>5</b>	Labour force status by region, females	12
<b>6</b>	Labour force status by region, persons	13
<b>7</b>	Teenage labour market	14
<b>8</b>	All employed persons by occupation	15
<b>9</b>	Employed persons by industry	16
<b>10</b>	Average hours worked	16
<b>11</b>	Job vacancies	17
<b>12</b>	Industrial disputes	17
<b>13</b>	Average weekly earnings of employees, original and trend	18
<b>14</b>	Indexes of total hourly rates of pay (excluding bonuses)	19
<b>15</b>	Summary of annual movements in wages and prices	20
<b>16</b>	House price index numbers	20
<b>17</b>	Consumer price index, Hobart and eight capital cities combined	21
<b>18</b>	Price index of materials used in building other than house building, Hobart	22
<b>19</b>	Production of selected commodities	24
<b>20</b>	Livestock slaughtering, original	25
<b>21</b>	Livestock slaughtering, seasonally adjusted and trend	25
<b>22</b>	Meat production	26
<b>23</b>	Principal mineral concentrates produced	26
<b>24</b>	Sawmills and plywood mills, logs delivered and timber produced	27
<b>25</b>	Chipping and grinding of wood	28
<b>26</b>	Logs delivered for milling or chipping	28
<b>27</b>	Building approvals, original	29
<b>28</b>	Secured housing commitments, original, seasonally adjusted and trend	30
<b>29</b>	Private new capital expenditure by type of asset, original	30
<b>30</b>	Banking statistics	31
<b>31</b>	Accommodation establishments	32
<b>32</b>	National Parks, person entries	33
<b>33</b>	Tracks in National Parks, walker registrations	33
<b>34</b>	Sales of new motor vehicles, by type, original and trend	34
<b>35</b>	Turnover of retail establishments at current prices, original and trend	35
<b>36</b>	Value of overseas trade, Tasmania and Australia	36
<b>37</b>	Merchandise exports by country, original	36
<b>38</b>	Merchandise exports by commodity, original	37
<b>39</b>	Major Statistical Indicators, Australia and state comparisons	38
<b>40</b>	Major Statistical Indicators, Tasmanian Statistical Divisions	40



# 1

## POPULATION

	<i>Estimated resident population</i>	<i>Natural increase(a)</i>	<i>Net estimated migration gain</i>	<i>Total population growth</i>	<i>Annual growth rate(b)</i>
	'000	'000	'000	'000	%
<b>1998-99</b>	472.0	2.7	-3.6	-0.4	-0.09
<b>1999-00</b>	472.1	2.1	-2.6	0.1	0.01
<b>2000-01</b>	472.9	2.4	-2.4	0.8	0.18
<b>1999</b>					
December qtr	472.3	0.5	-0.5	0.1	-0.16
<b>2000</b>					
March qtr	472.2	0.6	-0.8	-0.1	-0.10
June qtr	472.1	0.5	-0.8	-0.2	-0.11
September qtr	472.1	0.5	-0.7	—	-0.16
December qtr	472.3	0.4	-0.4	0.2	-0.15
<b>2001</b>					
March qtr	472.7	0.8	-0.6	0.4	-0.07
June qtr	472.9	0.7	-0.7	0.2	-0.01
September qtr	472.7	0.2	-0.4	-0.2	0.01
December qtr p	473.3	0.8	-0.3	0.5	0.2

(a) Excess of live births registered over deaths registered (based on usual State of residence).

(b) Percentage growth from same quarter in previous year.

Source: Australian Demographic Statistics (cat. no. 3101.0).

# 2

## BIRTHS, DEATHS AND MARRIAGES(a)

	<i>Births</i>		<i>Deaths</i>		<i>Infant mortality(b)</i>		<i>Marriages</i>	
	<i>no.</i>	<i>rate(c)</i>	<i>no.</i>	<i>rate(d)</i>	<i>no.</i>	<i>rate(e)</i>	<i>no.</i>	<i>rate(f)</i>
<b>1998-99</b>	6 384	1.95	3 726	6.2	41	6.4	2 483	5.3
<b>1999-2000</b>	5 804	1.82	3 715	6.2	38	6.6	2 648	5.6
<b>2000-01 p</b>	6 263	2.00	3 895	6.3	32	5.1	2 448	5.2
<b>1999</b>								
December qtr	1 447	..	929	..	8	5.5	678	..
<b>2000</b>								
March qtr	1 416	..	847	..	5	3.5	910	..
June qtr	1 407	..	917	..	9	6.4	733	..
September qtr	1 405	..	954	..	6	4.3	364	..
December qtr	1 376	..	1 012	..	8	5.8	582	..
<b>2001</b>								
March qtr	1 775	..	968	..	9	5.1	791	..
June qtr	1 707	..	961	..	9	5.3	711	..
September qtr	1 173	..	987	..	11	9.4	346	..
December qtr	1 765	..	956	..	3	1.7	336	..

(a) Usual residents of Tasmania.

(b) Deaths of children under one year of age.

(c) Total fertility rate. The sum of age specific fertility rates (live births at each age of a mother per female population of that age). It represents the number of children a woman would bear during her lifetime if she experienced age-specific fertility rates at each age of her reproductive life.

(d) Standardised death rate. The overall death rate, per 1,000 persons, that would have prevailed in a standard population if it had experienced at each age the death rates of the population being studied. The standard population used in these calculations is all persons in the 1991 Australian population.

(e) Rate per 1,000 live births.

(f) Crude marriage rate is the number of marriages registered during the financial year, per 1,000 estimated resident population at 31 December of that year.

Source: Australian Demographic Statistics (cat. no. 3101.0).

## 3

## LABOUR FORCE STATUS(a)—SEASONALLY ADJUSTED AND TREND

	Seasonally adjusted series(b)				Trend series(b)			
	Employed	Unemployed	Unemployment rate	Participation rate	Employed	Unemployed	Unemployment rate	Participation rate
	'000	'000	%	%	'000	'000	%	%
MALES								
<b>2001</b>								
June	109.9	11.8	9.7	67.2	109.4	12.3	10.1	67.2
July	109.1	12.4	10.2	67.1	109.1	12.5	10.3	67.1
August	107.1	13.0	10.8	66.3	109.0	12.7	10.4	67.2
September	109.7	13.1	10.7	67.8	109.2	12.7	10.4	67.3
October	109.9	12.4	10.1	67.5	109.6	12.6	10.3	67.5
November	110.6	12.7	10.3	68.0	110.1	12.2	10.0	67.5
December	109.7	11.5	9.5	66.9	110.3	11.8	9.7	67.4
<b>2002</b>								
January	110.8	11.4	9.3	67.4	110.1	11.4	9.4	67.1
February	110.6	10.5	8.6	66.8	109.6	11.3	9.3	66.7
March	108.7	11.6	9.6	66.4	109.0	11.2	9.3	66.3
April	107.7	11.0	9.3	65.5	108.5	11.3	9.4	66.0
May	106.9	12.0	10.1	65.5	108.1	11.4	9.5	65.8
June	109.2	11.4	9.5	66.4	107.9	11.5	9.7	65.8
FEMALES								
<b>2001</b>								
June	88.5	6.9	7.3	49.8	88.9	7.1	7.4	50.2
July	88.4	8.3	8.5	50.5	89.1	7.3	7.5	50.3
August	89.0	7.5	7.8	50.4	89.3	7.3	7.6	50.4
September	89.9	7.6	7.7	50.8	89.5	7.3	7.5	50.5
October	90.1	6.5	6.7	50.4	89.6	7.2	7.5	50.5
November	90.3	6.6	6.8	50.5	89.4	7.2	7.5	50.4
December	88.8	7.0	7.3	50.0	89.0	7.2	7.5	50.2
<b>2002</b>								
January	87.6	8.2	8.5	49.9	88.7	7.2	7.5	50.0
February	88.3	8.4	8.6	50.3	88.6	7.1	7.5	49.8
March	88.9	5.9	6.2	49.4	88.8	6.9	7.3	49.8
April	88.7	6.1	6.4	49.3	89.2	6.7	7.0	49.9
May	90.2	6.3	6.5	50.2	89.6	6.6	6.8	50.0
June	90.6	7.3	7.5	50.9	90.1	6.5	6.7	50.2
PERSONS								
<b>2001</b>								
June	198.3	18.7	8.6	58.3	198.3	19.3	8.9	58.4
July	197.6	20.7	9.5	58.6	198.1	19.7	9.1	58.5
August	196.1	20.5	9.5	58.1	198.3	20.0	9.1	58.6
September	199.6	20.6	9.4	59.1	198.7	20.0	9.1	58.7
October	200.1	18.9	8.6	58.7	199.2	19.8	9.0	58.7
November	200.9	19.3	8.8	59.0	199.5	19.5	8.9	58.7
December	198.5	18.6	8.6	58.2	199.3	19.0	8.7	58.5
<b>2002</b>								
January	198.4	19.6	9.0	58.4	198.8	18.7	8.6	58.3
February	198.9	18.8	8.6	58.3	198.2	18.4	8.5	58.0
March	197.7	17.5	8.1	57.6	197.8	18.2	8.4	57.8
April	196.4	17.1	8.0	57.2	197.7	18.0	8.4	57.7
May	197.0	18.3	8.5	57.6	197.7	18.0	8.3	57.7
June	199.8	18.7	8.6	58.4	198.0	18.0	8.3	57.8

(a) For explanation of terms and concepts, refer to *Labour Force, Australia, Preliminary* (cat. no. 6202.0). At April 2001, estimates for prior periods were revised because of some minor definitional changes.

(b) Seasonal factors are reviewed annually to take account of each additional year's data. The results of the review are used to compile revised seasonally adjusted and trend estimates each February. Trend estimates for the most recent months are also revised each month; see Notes on page 2.

Source: *Labour Force, Australia, Preliminary* (cat. no. 6202.0).

## 4

## LABOUR FORCE STATUS BY REGION—MALES(a)(b)

	<i>Total employed</i>	<i>Total unemployed</i>	<i>Unemployment rate</i>	<i>Participation rate</i>
	'000	'000	%	%
HOBART AND SOUTHERN STATISTICAL DIVISIONS				
<b>2000</b>				
June	51.9	6.1	10.6	66.0
<b>2001</b>				
June	51.9	5.4	9.5	65.5
<b>2002</b>				
April	48.5	5.8	10.7	62.5
May	48.7	5.5	10.2	63.0
June	49.4	5.3	9.8	63.4
NORTHERN STATISTICAL DIVISION				
<b>2000</b>				
June	34.1	3.3	8.9	69.9
<b>2001</b>				
June	34.2	3.0	8.1	69.8
<b>2002</b>				
April	32.6	2.5	7.0	68.4
May	32.2	2.9	8.3	67.4
June	32.6	2.4	6.8	66.3
MERSEY-LYELL STATISTICAL DIVISION				
<b>2000</b>				
June	23.6	3.8	13.8	69.9
<b>2001</b>				
June	23.6	2.7	10.4	65.4
<b>2002</b>				
April	27.0	2.5	8.5	68.1
May	26.9	2.6	8.7	67.8
June	27.1	3.1	10.2	71.0
TASMANIA				
<b>2000</b>				
June	109.5	13.2	10.8	68.0
<b>2001</b>				
June	109.6	11.2	9.3	66.7
<b>2002</b>				
April	108.1	10.8	9.1	65.5
May	107.7	11.0	9.3	65.4
June	109.1	10.8	9.0	66.0

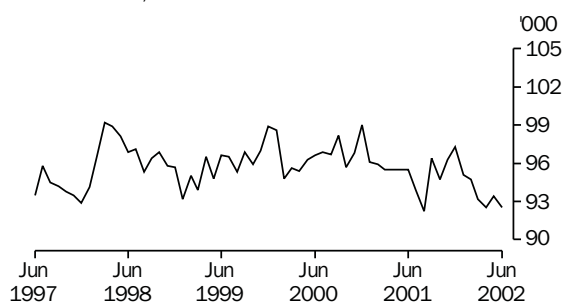
(a) For explanation of terms and concepts, refer to *Labour Force, Australia* (cat. no. 6203.0).

(b) Data in this table are original series, i.e. they are not part of a seasonally adjusted or a trend series. Accordingly, care should be exercised when using these data.

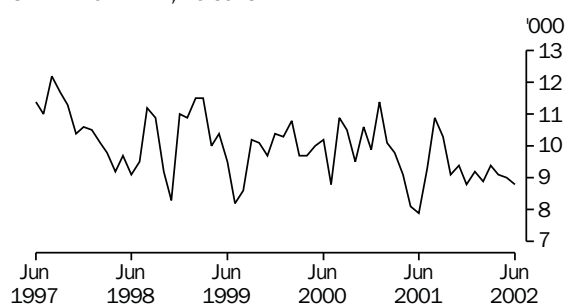
Source: *Labour Force, Selected Summary Tables, Australia* (cat. no. 6291.0.40.001).

## Hobart and Southern Statistical Divisions (see table 6)

EMPLOYMENT, Persons



UNEMPLOYMENT, Persons



## 5

## LABOUR FORCE STATUS BY REGION—FEMALES(a)(b)

	<i>Total employed</i>	<i>Total unemployed</i>	<i>Unemployment rate</i>	<i>Participation rate</i>
	'000	'000	%	%
HOBART AND SOUTHERN STATISTICAL DIVISIONS				
<b>2000</b>				
June	44.7	4.1	8.3	52.7
<b>2001</b>				
June	43.7	2.5	5.4	49.1
<b>2002</b>				
April	44.1	3.3	7.0	50.8
May	44.7	3.5	7.2	52.0
June	43.1	3.5	7.5	50.2
NORTHERN STATISTICAL DIVISIONS				
<b>2000</b>				
June	25.8	1.2	4.4	49.0
<b>2001</b>				
June	25.4	2.0	7.3	50.2
<b>2002</b>				
April	26.3	1.5	5.6	51.7
May	25.4	1.8	6.5	50.2
June	26.2	1.6	5.8	51.4
MERSEY-LYELL STATISTICAL DIVISIONS				
<b>2000</b>				
June	19.6	1.8	8.3	49.9
<b>2001</b>				
June	18.8	2.0	9.5	48.7
<b>2002</b>				
April	20.0	1.0	4.8	46.6
May	21.0	1.1	5.2	48.5
June	20.8	1.7	7.6	49.3
TASMANIA				
<b>2000</b>				
June	90.1	7.0	7.2	51.0
<b>2001</b>				
June	87.9	6.5	6.8	49.3
<b>2002</b>				
April	90.3	5.9	6.1	50.1
May	91.0	6.4	6.6	50.7
June	90.1	6.8	7.0	50.4

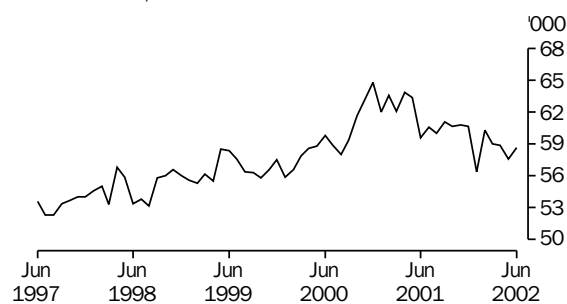
(a) For explanation of terms and concepts, refer to *Labour Force, Australia* (cat. no. 6203.0).

(b) Data in this table are original series, i.e. they are not part of a seasonally adjusted or a trend series. Accordingly, care should be exercised when using these data.

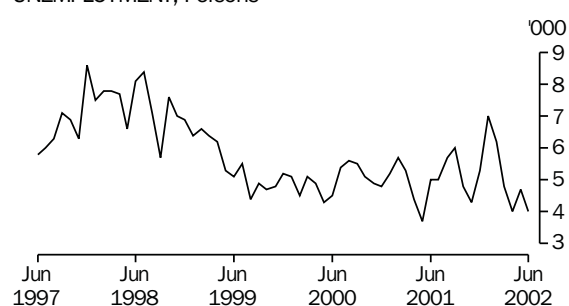
Source: *Labour Force, Selected Summary Tables, Australia* (cat. no. 6291.0.40.001).

## Northern Statistical Division (see table 6)

## EMPLOYMENT, Persons



## UNEMPLOYMENT, Persons



## 6

## LABOUR FORCE STATUS BY REGION—PERSONS(a)(b)

	<i>Total employed</i>	<i>Total unemployed</i>	<i>Unemployment rate</i>	<i>Participation rate</i>
	'000	'000	%	%
HOBART AND SOUTHERN STATISTICAL DIVISIONS				
<b>2000</b>				
June	96.6	10.2	9.5	59.2
<b>2001</b>				
June	95.5	7.9	7.7	57.0
<b>2002</b>				
April	92.5	9.1	9.0	56.4
May	93.4	9.0	8.8	57.3
June	92.5	8.8	8.7	56.6
NORTHERN STATISTICAL DIVISION				
<b>2000</b>				
June	59.8	4.5	7.0	59.3
<b>2001</b>				
June	59.6	5.0	7.8	59.9
<b>2002</b>				
April	58.9	4.0	6.4	59.9
May	57.6	4.7	7.5	58.7
June	58.7	4.0	6.4	58.8
MERSEY-LYELL STATISTICAL DIVISION				
<b>2000</b>				
June	43.2	5.5	11.4	59.5
<b>2001</b>				
June	42.5	4.7	10.0	56.8
<b>2002</b>				
April	47.0	3.5	6.9	57.1
May	47.8	3.7	7.2	57.9
June	47.9	4.8	9.1	59.8
TASMANIA				
<b>2000</b>				
June	199.6	20.2	9.2	59.3
<b>2001</b>				
June	197.6	17.6	8.2	57.8
<b>2002</b>				
April	198.4	16.6	7.7	57.6
May	198.8	17.4	8.1	57.8
June	199.2	17.6	8.1	58.0

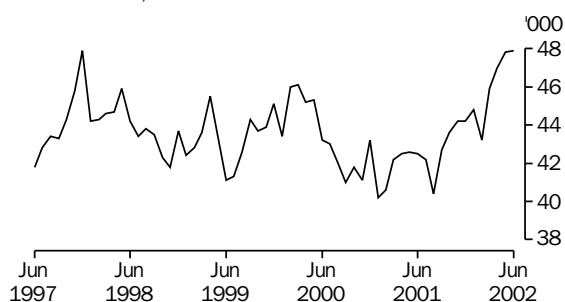
(a) For explanation of terms and concepts, refer to *Labour Force, Australia* (cat. no. 6203.0).

(b) Data in this table are original series, i.e. they are not part of a seasonally adjusted or a trend series. Accordingly, care should be exercised when using these data.

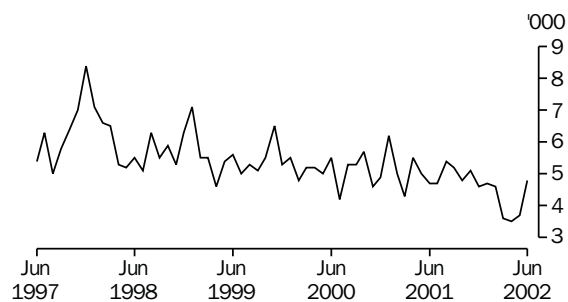
Source: *Labour Force, Selected Summary Tables, Australia* (cat. no. 6291.0.40.001).

## Mersey-Lyell Statistical Division (see table 6)

EMPLOYMENT, Persons



UNEMPLOYMENT, Persons



## 7

## TEENAGE LABOUR MARKET(a)

	<i>Employed</i>		<i>Unemployed</i>		<i>Labour force</i>	<i>Not in labour force</i>	<i>Civilian population aged 15–19</i>	<i>Unemployment rate</i>	<i>Unemployment population ratio</i>	<i>Participation rate</i>
	<i>Full time</i>	<i>Total</i>	<i>Looking for full time work</i>	<i>Total</i>						
	'000	'000	'000	'000						
ATTENDING NEITHER A SCHOOL NOR A TERTIARY INSTITUTION FULL TIME										
<b>2000</b>										
June	6.3	8.3	2.1	2.3	10.6	1.8	12.4	21.7	18.6	85.5
<b>2001</b>										
June	7.1	9.5	1.9	2.0	11.5	1.2	12.7	17.3	15.6	90.3
<b>2002</b>										
April	6.9	9.4	1.4	1.5	10.8	1.5	12.3	13.4	11.8	87.8
May	6.9	9.4	1.3	1.4	10.8	1.5	12.3	13.3	11.7	87.9
June	6.1	9.2	1.4	1.6	10.8	1.3	12.1	14.4	12.9	89.3
ATTENDING SCHOOL OR A TERTIARY INSTITUTION FULL TIME										
<b>2000</b>										
June	0.5	7.6	0.7	1.7	9.3	13.1	22.4	18.5	7.7	41.5
<b>2001</b>										
June	0.1	5.9	0.6	1.7	7.6	14.2	21.8	21.8	7.6	34.9
<b>2002</b>										
April	0.2	6.1	0.4	2.1	8.2	13.6	21.8	26.1	9.8	37.7
May	0.2	6.4	0.5	2.2	8.5	13.3	21.9	25.6	10.0	39.1
June	0.5	7.0	0.4	2.0	9.0	13.1	22.1	22.5	9.2	40.7
TOTAL										
<b>2000</b>										
June	6.8	15.9	2.8	4.0	19.9	14.9	34.8	20.2	11.6	57.2
<b>2001</b>										
June	7.2	15.4	2.5	3.6	19.1	15.4	34.5	19.1	10.6	55.3
<b>2002</b>										
April	7.0	15.4	1.7	3.6	19.0	15.1	34.1	18.9	10.5	55.7
May	7.1	15.7	1.8	3.6	19.3	14.8	34.1	18.8	10.6	56.6
June	6.6	16.2	1.8	3.6	19.8	14.4	34.1	18.1	10.5	57.9

(a) Persons aged 15–19 years. For explanation of terms and concepts, refer to *Labour Force, Australia* (cat. no. 6203.0). Care should be exercised when using these series as some estimates are subject to high sampling variability.

Source: Data available on request, *Labour Force, Estimates; Labour Force, Teenage Employment and Unemployment, Australia, Preliminary, Data Report* (cat. no. 6202.0.40.001).

## 8

## ALL EMPLOYED PERSONS BY OCCUPATION(a)

	February 2001			February 2002		
	Persons		Females	Persons		Proportion of total employed
	'000	Males		'000	Males	February 2001 %
<b>Managers and administrators</b>						
Generalist managers	2.3	1.7	0.4	2.1	1.1	1.1
Specialist managers	4.1	4.6	0.6	5.3	2.0	2.7
Farmers and farm managers	6.5	4.3	1.2	5.5	3.2	2.8
<b>Total</b>	<b>12.9</b>	<b>10.6</b>	<b>2.2</b>	<b>12.8</b>	<b>6.4</b>	<b>6.5</b>
<b>Professionals</b>						
Science, building and engineering professionals	4.4	4.4	0.5	4.9	2.2	2.5
Business and information professionals	5.6	3.9	1.6	5.6	2.8	2.8
Health professionals	7.8	2.3	5.6	7.9	3.9	4.0
Education professionals	7.0	2.9	5.3	8.1	3.5	4.1
Social, arts and miscellaneous professionals	5.6	3.0	2.3	5.3	2.8	2.7
<b>Total</b>	<b>30.5</b>	<b>16.4</b>	<b>15.4</b>	<b>31.8</b>	<b>15.2</b>	<b>16.0</b>
<b>Associate professionals</b>						
Science, engineering and related associate professionals	2.8	2.7	0.5	3.3	1.4	1.7
Business and administration associate professionals	4.4	3.0	3.4	6.4	2.2	3.2
Managing supervisors (sales and service)	10.6	5.5	3.2	8.8	5.3	4.4
Health and welfare associate professionals	1.2	0.5	1.5	2.0	0.6	1.0
Other associate professionals	4.1	2.4	2.3	4.7	2.0	2.4
<b>Total</b>	<b>21.8</b>	<b>13.7</b>	<b>9.5</b>	<b>23.1</b>	<b>10.9</b>	<b>11.7</b>
<b>Tradespersons and related workers</b>						
Mechanical and fabrication engineering tradespersons	5.5	5.3	—	5.3	2.7	2.7
Automotive tradespersons	2.2	2.6	0.2	2.8	1.1	1.4
Electrical and electronics tradespersons	4.2	3.7	—	3.7	2.1	1.9
Construction tradespersons	4.8	4.7	—	4.7	2.4	2.4
Other tradespersons and related workers	9.4	5.3	2.4	7.7	4.7	3.9
<b>Total</b>	<b>26.1</b>	<b>21.5</b>	<b>2.6</b>	<b>24.1</b>	<b>13.0</b>	<b>12.2</b>
<b>Advanced clerical and service workers</b>						
Secretaries and personal assistants	2.4	0.2	2.0	2.2	1.2	1.1
Other advanced clerical and service workers	2.7	1.0	2.4	3.4	1.3	1.7
<b>Total</b>	<b>5.1</b>	<b>1.2</b>	<b>4.4</b>	<b>5.5</b>	<b>2.5</b>	<b>2.8</b>
<b>Intermediate clerical, sales and service workers</b>						
Intermediate clerical workers	24.1	3.5	16.5	20.0	12.0	10.1
Intermediate sales and related workers	3.9	2.7	0.9	3.6	1.9	1.8
Intermediate service workers	13.3	2.8	10.0	12.8	6.6	6.5
<b>Total</b>	<b>41.3</b>	<b>8.9</b>	<b>27.4</b>	<b>36.3</b>	<b>20.6</b>	<b>18.3</b>
<b>Intermediate production and transport workers</b>						
Intermediate plant operators	6.2	6.1	0.2	6.3	3.1	3.2
Intermediate machine operators	2.6	1.3	0.5	1.8	1.3	0.9
Road and rail transport drivers	6.8	5.6	0.2	5.8	3.4	2.9
Other intermediate production and transport workers	3.5	2.9	0.3	3.2	1.7	1.6
<b>Total</b>	<b>19.1</b>	<b>15.9</b>	<b>1.1</b>	<b>17.1</b>	<b>9.5</b>	<b>8.6</b>
<b>Elementary clerical, sales and service workers</b>						
Elementary clerks	1.4	0.9	1.0	1.9	0.7	1.0
Elementary sales workers	19.9	6.0	13.3	19.3	9.9	9.7
Elementary service workers	2.4	1.1	0.9	2.1	1.2	1.1
<b>Total</b>	<b>23.6</b>	<b>8.0</b>	<b>15.3</b>	<b>23.3</b>	<b>11.8</b>	<b>11.8</b>
<b>Labourers and related workers</b>						
Cleaners	6.0	2.1	4.6	6.7	3.0	3.4
Factory labourers	4.5	3.8	1.4	5.1	2.2	2.6
Other labourers and related workers	9.1	8.2	4.1	12.3	4.5	6.2
<b>Total</b>	<b>19.6</b>	<b>14.1</b>	<b>10.0</b>	<b>24.1</b>	<b>9.8</b>	<b>12.2</b>
<b>Total employed</b>	<b>200.1</b>	<b>110.3</b>	<b>87.9</b>	<b>198.2</b>	<b>100.0</b>	<b>100.0</b>

(a) For explanation of terms and concepts, refer to *Labour Force, Australia* (cat. no. 6203.0).

Source: Data available on request, *Labour Force, Estimates*.

## 9

## EMPLOYED PERSONS BY INDUSTRY(a)

	Number of Employees				Percentage change from
	May 2001	November 2001	February 2002	May 2002	May 2001
	'000	'000	'000	'001	%
Agriculture, forestry and fishing	18.1	18.9	16.5	17.4	-3.9
Mining	2.4	1.2	1.8	1.8	-25
Manufacturing	23.1	21.9	21.0	20.7	-10.4
Electricity, gas and water supply	1.6	2.3	2.0	2.2	37.5
Construction	11.0	10.3	10.6	11.3	2.7
Wholesale trade	9.5	8.1	9.4	9.4	-1.1
Retail trade	34.5	32.4	32.3	31.5	-8.7
Accommodation, cafes and restaurants	9.5	10.3	10.8	9.1	-4.2
Transport and storage	9.3	8.0	7.6	8.9	-4.3
Communication services	3.3	3.0	3.7	3.0	-9.1
Finance and insurance	4.8	5.8	6.1	6.1	27.1
Property and business services	14.4	16.3	15.5	14.6	1.4
Government administration and defence	10.9	10.7	10.3	10.6	-2.8
Education	12.6	13.8	13.2	15.3	21.4
Health and community services	23.9	23.9	22.7	23.8	-0.4
Cultural and recreational services	3.9	5.8	6.2	4.9	25.6
Personal and other services	8.6	8.8	8.5	8.2	-4.7
<b>Total all industries</b>	<b>201.5</b>	<b>201.4</b>	<b>198.2</b>	<b>198.8</b>	<b>-1.3</b>

(a) For explanation of terms and concepts, refer to *Labour Force, Australia* (Cat. no. 6203.0).

Source: ABS data available on request; *Labour Force Survey*.

## 10

## AVERAGE HOURS WORKED

	Average weekly total hours worked, all employed persons(a)		
	Males	Females	Persons
<b>2000</b>			
November	39.5	27.6	34.2
<b>2001</b>			
February	38.5	26.2	33.0
May	40.4	27.3	34.5
August	38.0	27.3	33.1
November	37.9	27.2	33.1
<b>2002</b>			
February	37.3	25.1	31.9

(a) For explanation of terms and concepts, refer to *Labour Force, Australia* (cat. no. 6203.0).

Source: Data available on request; *Labour Force Survey*.



# 11

## JOB VACANCIES(a)(b)

	no.	rate(c)
	'000	%
<b>2001</b>		
February	2.1	1.2
May	1.4	0.9
August	1.1	0.7
November	*1.5	0.9
<b>2002</b>		
February	1.2	0.8
May	*1.3	*0.8

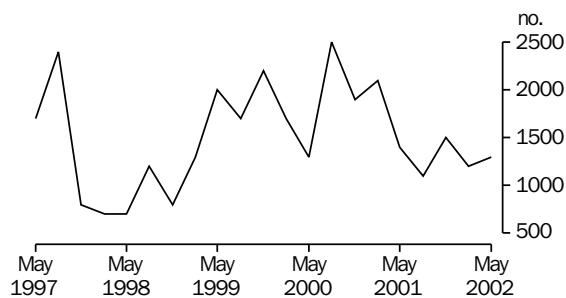
(a) For explanation of terms and concepts, refer to *Job Vacancies, Australia* (cat. no. 6354.0).

(b) Care should be exercised in using these series as some estimates are subject to high sampling variability.

(c) Job vacancies expressed as a percentage of the number of employees plus job vacancies.

Source: *Job Vacancies, Australia* (cat.no. 6354.0).

### JOB VACANCIES, TASMANIA



# 12

## INDUSTRIAL DISPUTES(a)

	Working days lost	Twelve months ended	Working days lost per thousand employees
	'000		no.
<b>2001</b>			
April	0.1	April	4
May	—	May	3
June	0.1	June	3
July	0.2	July	4
August	—	August	4
September	—	September	3
October	—	October	3
November	—	November	3
December	0.9	December	7
<b>2002</b>			
January	—	January	7
February	—	February	7
March	1.8	March	18
April	—	April	17
<b>Twelve months ended</b>			
April 2002	3.0	..	..

(a) For explanation of terms and concepts, refer to *Industrial Disputes, Australia* (cat. no. 6321.0).

Source: *Industrial Disputes, Australia* (cat.no. 6321.0).

## AVERAGE WEEKLY EARNINGS OF EMPLOYEES(a)—ORIGINAL AND TREND

	Males			Females			Persons		
	Full-time adult ordinary time earnings	Full-time adult total earnings	All males total earnings	Full-time adult ordinary time earnings	Full-time adult total earnings	All females total earnings	Full-time adult ordinary time earnings	Full-time adult total earnings	All employees total earnings
ORIGINAL									
<b>2000</b>									
November	784.6	824.7	683.2	663.4	685.1	431.0	741.3	774.8	549.5
<b>2001</b>									
February	786.2	819.5	678.0	676.9	688.8	462.0	745.8	771.2	568.4
May	788.7	820.9	685.2	691.3	704.1	462.9	755.9	781.5	576.6
August	789.2	821.9	688.5	701.1	717.7	474.1	758.1	785.2	581.9
November	812.0	848.8	720.6	717.4	735.8	457.3	778.7	809.0	584.2
<b>2002</b>									
February	830.5	867.8	711.9	716.1	731.6	458.6	788.8	818.2	582.8
TREND(b)									
<b>2000</b>									
November	785.5	822.8	680.1	660.5	676.4	436.5	741.0	770.8	553.8
<b>2001</b>									
February	784.1	818.2	676.5	675.5	690.4	452.1	745.3	772.6	562.4
May	787.6	820.1	684.9	692.3	707.2	466.2	754.0	780.2	575.9
August	796.9	830.8	698.8	704.1	719.8	468.7	764.6	791.9	583.7
November	809.7	845.8	709.0	711.3	727.5	463.4	774.9	804.1	584.2
<b>2002</b>									
February	824.6	863.1	714.8	715.9	731.8	455.0	785.1	816.1	580.4

(a) For explanation of terms and concepts, refer to *Average Weekly Earnings, Australia* (cat. no. 6302.0).

(b) ABS trend estimates for the most recent months are revised, see Notes on page 2.

Source: *Average Weekly Earnings, Australia* (cat. no. 6302.0).

	Index numbers				Percentage change	
	June qtr 2001	Sep qtr 2001	Dec qtr 2001	Mar qtr 2002	Sep qtr 2001 to Dec qtr 2001	Dec qtr 2001 to Mar qtr 2002
SELECTED INDUSTRIES(c)						
Manufacturing	109.9	111.1	111.8	113.0	0.6	1.1
Retail trade	109.5	110.7	111.2	111.5	0.5	0.3
Government administration and defence	108.9	110.2	111.1	112.1	0.8	0.9
Education	114.2	114.6	114.7	116.3	0.1	1.4
Health and community services	108.6	109.8	110.4	111.6	0.5	1.1
<b>All industries(d)</b>	<b>110.3</b>	<b>111.5</b>	<b>112.1</b>	<b>113.1</b>	<b>0.5</b>	<b>0.9</b>
SELECTED OCCUPATIONS						
Professionals	111.8	113.0	113.4	114.6	0.4	1.1
Associate professionals	110.7	111.7	112.3	113.2	0.5	0.8
Tradespersons & related workers	109.1	110.7	111.2	112.2	0.5	0.9
Intermediate clerical, sales & service workers	110.2	111.1	111.8	113.1	0.6	1.2
Intermediate production & transport workers	110.0	111.1	111.7	112.5	0.5	0.7
Elementary clerical, sales & service workers	112.1	112.9	113.0	113.6	0.1	0.5
Labourers & related workers	109.4	110.0	111.1	112.3	1.0	1.1
<b>All occupations</b>	<b>110.3</b>	<b>111.5</b>	<b>112.1</b>	<b>113.1</b>	<b>0.5</b>	<b>0.9</b>

(a) Base of each index: September quarter 1997 = 100.0.

(b) These indexes are a measure of quarterly changes in wage and salary costs for employee jobs. They are one of four sets of indexes that together comprise the Wage Cost Index. For explanation of terms and concepts, refer to *Wage Cost Index, Australia* (cat. no. 6345.0).

(c) Industry is shown at the ANZSIC division level for selected divisions.

(d) Excludes Agriculture, forestry and fishing.

Source: Data available on request; Wage Cost Index.

# 15

## SUMMARY OF ANNUAL MOVEMENTS IN WAGES AND PRICES(a), PERCENTAGE CHANGE FROM PREVIOUS YEAR — ORIGINAL

	CPI	Price index of materials used in house building	Price index of materials used in building other than house building	Average weekly total earnings, full-time adult employees(b)
	all groups—Hobart	all groups—Hobart	all groups—Hobart	
	%	%	%	%
<b>1998–99</b>	1.0	1.0	0.9	2.4
<b>1999–2000</b>	1.9	1.3	0.4	2.5
<b>2000–01</b>	5.8	1.8	0.3	3.2
<b>2000</b>				
March	2.6	2.0	0.6	0.6
June	3.3	3.4	1.2	6.5
September	6.5	(c)2.5	(c)–0.5	5.4
December	5.8	2.4	0.6	3.1
<b>2001</b>				
March	5.4	1.4	0.8	2.7
June	5.5	0.8	0.3	1.7
September	1.1	1.7	2.0	2.6
December	2.1	1.6	1.2	–4.4
<b>2002</b>				
March	2.3	1.8	1.2	6.1

(a) See note 5 on page 2 of this issue on the impacts of The New Tax System (TNTS).

(b) March, June, September and December data relates to February, May, August and November survey dates as published in *Average Weekly Earnings, Australia* (cat. no. 6302.0).

(c) This quarter affected by the removal of the Wholesale Sales Tax from 1 July 2000.

Source: ABS data available on request; *Producer Price Index* (cat. no. 6427.0); *Consumer Price Index, Australia* (cat. no. 6401.0); *Average Weekly Earnings, Australia* (cat. no. 6302.0).

# 16

## HOUSE PRICE INDEX NUMBERS(a)(b)

	Established house price index		Project home price index	
	Index	% change(c)	Index	% change(c)
<b>1998–99</b>	123.2	–1.8	123.3	—
<b>1999–2000</b>	129.0	4.7	126.2	2.4
<b>2000–01</b>	134.2	4.0	140.7	11.5
<b>2000</b>				
March	128.6	0.6	127.5	1.7
June	134.2	4.4	127.9	0.3
September	134.3	0.1	(d)140.3	(d)9.7
December	133.7	–0.4	140.3	—
<b>2001</b>				
March	133.8	0.1	140.5	0.1
June	135.1	1.0	141.8	0.9
September	134.9	–0.1	142.7	0.6
December	138.3	2.5	143.4	0.5
<b>2002</b>				
March	142.1	2.7	144.6	0.8

(a) Base of each Index: 1989–90 = 100.

(b) Used in calculating the mortgage interest charges component of the Consumer Price Index.

(c) Percentage change over previous period.

(d) See note 5 on page 2 of this issue on the impacts of The New Tax System (TNTS) introduced on 1 July 2000.

Source: *House Price Indexes: Eight Capital Cities* (cat. no. 6416.0).

Hobart

	Food	Clothing and Footwear	Housing	Household furnishings, supplies and services	Transportation	Alcohol and tobacco
<b>1999</b>						
March	125.5	104.7	95.8	119.5	118.4	161.5
June	126.8	104.6	95.9	119.4	120.4	160.0
September	126.3	104.5	96.9	119.3	123.1	158.1
December	127.5	103.9	97.4	119.1	123.8	163.3
<b>2000</b>						
March	127.8	104.9	98.8	120.2	126.6	167.2
June	129.1	105.0	99.2	121.2	129.3	169.9
September	130.9	112.8	105.5	124.5	133.3	179.8
December	132.0	112.9	105.8	124.6	130.4	181.6
<b>2001</b>						
March	134.3	110.7	106.9	125.6	131.4	185.4
June	136.0	112.2	107.2	126.6	134.6	188.6
September	135.7	109.3	107.4	127.3	131.5	189.4
December	138.2	113.9	107.8	126.9	130.4	189.5
<b>2002</b>						
March	140.4	110.9	109.0	127.6	131.3	191.5

Hobart  
Weighted average of eight capital cities

	Health	Education	Index, all groups	% change over previous period, all groups	Index	% change over previous period
<b>1999</b>						
March	164.9	198.8	122.1	-0.5	121.8	-0.1
June	165.7	198.8	122.5	0.3	122.3	0.4
September	173.3	198.8	123.3	0.7	123.4	0.9
December	172.0	198.8	124.0	0.6	124.1	0.6
<b>2000</b>						
March	175.1	206.2	125.3	1.0	125.2	0.9
June	177.7	206.2	126.5	1.0	126.2	0.8
September	178.0	206.5	131.3	3.8	130.9	3.7
December	177.4	206.5	131.2	-0.1	131.3	0.3
<b>2001</b>						
March	181.5	215.1	132.1	0.7	132.7	1.1
June	181.4	215.1	133.4	1.0	133.8	0.8
September	180.3	215.0	132.8	-0.4	134.2	0.3
December	180.5	215.0	133.9	0.8	135.4	0.9
<b>2002</b>						
March	185.8	221.9	135.2	1.0	136.6	0.9

(a) Base year: 1989-90 = 100.

(b) Further information on construction of CPI indexes is contained in the bulletin *Australian Consumer Price Index Concepts, Sources and Methods* (cat. no. 6461.0).(c) As a result of the introduction of the 14th Series Australian CPI there have been changes to some groups and restructuring of some others. See Appendix A4 of the September quarter issue of *Consumer Price Index, Australia* (cat. no. 6401.0) for more information.

(d) See Note 5 on page 2 of this issue on the impacts of The New Tax System (TNTS) introduced on 1 July 2000.

Source: *Consumer Price Index, Australia* (cat. no. 6401.0).

*Index numbers for selected major building materials*

	<i>Structural timber</i>	<i>Clay bricks</i>	<i>Ready mixed concrete</i>	<i>Precast concrete products</i>	<i>Steel decking, cladding etc.</i>	<i>Structural steel</i>
<b>1998-99</b>	109.1	130.8	119.5	131.6	110.8	128.0
<b>1999-2000</b>	114.4	129.1	118.1	131.6	109.6	128.8
<b>2000-01</b>	120.6	132.6	117.9	131.6	107.6	129.3
<b>2000</b>						
March	116.9	130.9	117.5	131.6	110.1	128.8
June	120.7	131.6	117.5	131.6	109.8	128.8
September(b)	120.9	131.6	117.6	131.6	106.4	129.1
December	120.9	131.8	117.6	131.6	108.2	129.4
<b>2001</b>						
March	121.4	131.8	119.4	131.6	108.2	129.4
June	119.1	135.3	116.9	131.6	107.5	129.4
September	122.3	135.3	117.0	131.6	107.7	129.4
December	123.1	135.3	116.7	131.6	105.6	129.4
<b>2002</b>						
March	123.2	137.6	124.0	131.6	102.5	131.0

*Index numbers for selected major building materials*

	<i>Reinforcing steel bar, fabric and mesh</i>	<i>Aluminium windows</i>	<i>Fabricated steel products</i>	<i>Builders hardware</i>	<i>Sand and aggregate</i>	<i>Paint and other coatings</i>	<i>Non-ferrous pipes and fittings</i>
<b>1998-99</b>	113.4	107.3	116.0	113.4	127.9	133.3	161.2
<b>1999-2000</b>	110.5	108.5	114.0	116.0	144.0	133.7	168.2
<b>2000-01</b>	107.8	116.8	114.0	119.3	147.9	135.0	185.6
<b>2000</b>							
March	109.1	109.9	113.1	120.2	150.4	135.2	167.2
June	109.1	110.1	113.1	118.1	150.9	134.2	177.0
September(b)	107.8	110.1	113.1	117.3	145.5	131.8	177.2
December	107.9	116.6	113.0	118.8	146.1	135.7	183.8
<b>2001</b>							
March	107.8	120.3	116.1	119.6	151.6	136.2	193.1
June	107.8	120.3	113.9	121.4	148.4	136.2	188.1
September	107.8	120.3	113.9	123.4	147.1	137.6	183.2
December	107.9	120.3	114.4	123.6	147.4	137.4	178.1
<b>2002</b>							
March	107.9	120.3	111.4	123.3	147.4	137.6	182.0

(a) Base year: 1989-90 = 100.

(b) This quarter affected by the removal of the Wholesale Sales Tax from 1 July 2000.

*...continued*

	<i>All electrical materials</i>		<i>All mechanical services</i>		<i>All plumbing materials</i>	
	<i>Index</i>	<i>% change over previous period</i>	<i>Index</i>	<i>% change over previous period</i>	<i>Index</i>	<i>% change over previous period</i>
<b>1998-99</b>	115.8	-1.2	119.0	1.7	124.5	2.1
<b>1999-2000</b>	117.6	1.6	120.3	1.1	127.0	2.0
<b>2000-01</b>	117.3	-0.3	118.2	-1.7	132.7	4.5
<b>2000</b>						
March	118.3	0.7	120.3	0.4	128.0	1.2
June	118.7	0.3	121.9	1.3	131.0	2.3
September(b)	115.8	-2.4	117.3	-3.8	129.1	-1.5
December	117.6	1.6	118.0	0.6	131.8	2.1
<b>2001</b>						
March	117.8	0.2	118.4	0.3	136.0	3.2
June	117.9	0.1	119.0	0.5	134.0	-1.5
September	118.2	0.3	119.8	0.7	131.8	-1.6
December	118.7	0.4	120.1	0.3	130.4	-1.1
<b>2002</b>						
March	119.5	0.7	121.8	1.4	133.4	2.3

	<i>All groups excluding electrical materials and mechanical services</i>		<i>All groups</i>	
	<i>Index</i>	<i>% change over previous period</i>	<i>Index</i>	<i>% change over previous period</i>
<b>1998-99</b>	118.8	0.7	118.5	0.9
<b>1999-2000</b>	119.1	0.3	119.0	0.4
<b>2000-01</b>	120.5	1.2	119.3	0.3
<b>2000</b>				
March	119.3	0.8	119.2	0.7
June	119.7	0.3	119.7	0.4
September(b)	118.8	-0.8	117.9	-1.5
December	120.1	1.1	119.1	1.0
<b>2001</b>				
March	121.7	1.3	120.2	0.9
June	121.3	-0.3	120.1	-0.1
September	121.2	-0.1	120.3	0.2
December	121.2	-	120.5	0.2
<b>2002</b>				
March	122.2	0.8	121.6	0.9

(a) Base year: 1989-90 = 100.

(b) This quarter affected by the removal of the Wholesale Sales Tax from 1 July 2000.

Source: Data available on request; Producer Price Index (cat. no. 6427.0).

	Dairy products(a)			Staff hours worked	
	Whole milk(b)	Factory butter(c)	Factory cheese	Textile manufacturing(d)	Vegetable preserving
	million litres	tonnes	tonnes	'000	'000
<b>1998-99</b>	603.4	11 546	29 973	1 061	1 084
<b>1999-2000</b>	608.6	8 209	33 344	1 032	1 019
<b>2000-01</b>	589.7	5 949	32 355	938	1 037
<b>2001</b>					
May	40.0	290	2 490	94	119
June	23.2	409	1 722	75	85
July	15.6	231	564	88	94
August	28.8	255	1 136	94	101
September	65.4	746	4 300	83	84
October	88.8	980	3 786	93	77
November	87.0	1 026	3 933	98	91
December	84.9	1 125	4 356	64	99
<b>2002</b>					
January	76.9	1 063	2 693	61	40
February	61.5	527	3 214	88	85
March	56.5	373	3 797	77	90
April	44.5	n.y.a.	n.y.a.	85	108
May	37.4	n.y.a.	n.y.a.	81	99

	Refined zinc	Metallurgical refining	Electricity
	'000 tonnes	Index(e)	million kW.h
<b>1998-99</b>	214.3	125.0	9 910
<b>1999-2000</b>	231.7	133.2	10 050
<b>2000-01</b>	233.1	138.4	10 150
<b>2001</b>			
May	22.3	139.9	..
June	21.6	136.1	(June qtr) 2 620
July	18.9	132.7	..
August	20.6	137.0	..
September	20.9	136.2	(Sept qtr) 2 710
October	20.6	142.5	..
November	19.4	137.2	..
December	21.2	145.5	(Dec qtr) 2 470
<b>2002</b>			
January	20.6	144.1	..
February	20.5	132.7	..
March	21.4	144.5	(Mar qtr) 2380
April	21.7	144.3	..
May	23.7	150.2	..

(a) Source: Australian Dairy Corporation.

(b) Includes the whole milk equivalent of farm cream intake.

(c) Includes butter equivalent of butter oil.

(d) Includes spinning, weaving and carpet making. Reported by establishments which manufacture textiles only, or manufacture clothing and textiles in the one plant.

(e) Metallurgical refining index (Base year: 1979-80 = 100.0). Output from selected establishments covering the smelting and refining of ferro-alloys, zinc and aluminium. The weighting pattern is based on the establishments' value added as derived from the 1979-80 manufacturing Census. For multi product establishments, value added was apportioned to products on the basis of gross receipts from each product.

Source: Data available on request; Employees Hours Worked Survey; Monthly Production Survey; Manufacturing Survey.



## 20

### LIVESTOCK SLAUGHTERING—ORIGINAL

	Cattle					
	<i>Bulls, bullocks and steers</i>	<i>Cows and heifers</i>	<i>Calves</i>	<i>Sheep</i>	<i>Lambs</i>	<i>Pigs</i>
	'000	'000	'000	'000	'000	'000
<b>1998–99</b>	94.8	116.3	61.0	439.9	480.1	81.2
<b>1999–2000</b>	109.0	108.9	62.1	589.9	456.3	70.1
<b>2000–01</b>	90.2	94.2	49.7	364.7	416.1	57.6
<b>2000</b>						
May	9.0	11.6	1.7	48.2	37.5	5.7
<b>2001</b>						
May	6.6	9.2	1.0	29.0	27.4	5.0
June	7.0	11.7	0.6	25.6	42.7	5.9
July	6.4	6.4	1.4	17.7	35.3	4.2
August	5.8	4.2	18.2	15.0	46.4	4.5
September	5.0	4.0	16.2	15.8	36.3	5.1
October	5.9	6.6	5.2	24.2	35.1	4.8
November	7.3	6.1	1.0	25.5	38.9	4.5
December	6.2	5.3	0.2	25.2	26.9	5.4
<b>2002</b>						
January	6.5	3.9	0.1	23.3	26.2	2.9
February	9.2	5.3	0.1	24.8	37.3	3.7
March	7.5	7.2	0.2	25.9	33.5	4.7
April	6.8	9.1	0.7	21.6	33.5	4.1
May	8.3	12.4	0.8	30.3	44.9	5.1

Source: Data available on request; Livestock Slaughtered.

## 21

### LIVESTOCK SLAUGHTERING—SEASONALLY ADJUSTED(a) AND TREND(b)

	Seasonally adjusted			Trend		
	<i>Cattle and calves</i>	<i>Sheep and lambs</i>	<i>Pigs</i>	<i>Cattle and calves</i>	<i>Sheep and lambs</i>	<i>Pigs</i>
	'000	'000	'000	'000	'000	'000
<b>2000</b>						
May	22.6	84.8	5.4	21.5	87.6	5.2
<b>2001</b>						
May	16.1	54.9	4.6	18.1	58.0	4.7
June	18.0	63.9	4.6	17.5	69.5	4.6
July	17.5	65.0	4.3	17.4	73.1	4.7
August	17.9	90.5	4.4	17.6	75.8	4.8
September	16.7	78.7	5.4	17.8	75.5	5.0
October	18.9	74.3	5.2	17.8	71.2	5.0
November	18.4	65.7	5.3	17.3	63.3	4.9
December	17.1	50.8	5.1	16.6	55.2	4.7
<b>2002</b>						
January	14.3	39.8	3.6	16.1	49.8	4.5
February	15.9	48.7	4.1	15.8	48.4	4.3
March	14.1	46.1	4.2	15.9	49.6	4.2
April	17.5	53.3	4.3	16.2	52.2	4.2
May	18.1	67.8	4.4	16.6	55.9	4.2

(a) Seasonally adjusted factors are reviewed annually to take account of each additional year's original data. The results of the review are used to compile revised seasonally adjusted and trend estimates; see Notes page 2.

(b) ABS trend estimates for the most recent months are revised; see Notes page 2.

Source: ABS data available on request; Livestock Slaughtered.

## 22

### MEAT PRODUCTION(a)

	<i>Beef</i>	<i>Veal</i>	<i>Mutton</i>	<i>Lamb</i>	<i>Pig meat(b)</i>	<i>Total</i>
	<i>tonnes</i>	<i>tonnes</i>	<i>tonnes</i>	<i>tonnes</i>	<i>tonnes</i>	<i>tonnes</i>
<b>1998-99</b>	53 271	1 241	8 724	9 222	5 242	77 700
<b>1999-2000</b>	57 557	1 236	11 796	8 833	4 403	83 825
<b>2000-01</b>	48 771	996	7 232	8 014	3 583	68 596
<b>2000</b>						
May	5 317	37	949	729	366	7 399
<b>2001</b>						
May	4 009	25	571	529	310	5 444
June	4 630	15	507	829	370	6 351
July	3 400	29	347	692	254	4 722
August	2 762	357	294	942	276	4 630
September	2 500	317	311	721	314	4 163
October	3 401	100	475	687	296	4 960
November	3 783	25	516	769	264	5 357
December	3 111	7	510	525	308	4 460
<b>2002</b>						
January	3 071	4	458	517	175	4 226
February	4 190	4	496	745	220	5 656
March	3 998	8	505	660	279	5 449
April	4 290	17	422	669	240	5 637
May	5 542	18	579	906	295	7 341

(a) Carcass weight.

(b) Includes pork used for production of bacon and ham.

Source: Data available on request; Livestock Slaughtered.

## 23

### PRINCIPAL MINERAL CONCENTRATES PRODUCED

	<i>Copper</i>	<i>Iron (pellets)</i>	<i>Lead</i>	<i>Lead-zinc</i>	<i>Tin</i>	<i>Zinc</i>
	<i>'000 tonnes</i>	<i>'000 tonnes</i>	<i>'000 tonnes</i>	<i>'000 tonnes</i>	<i>'000 tonnes</i>	<i>'000 tonnes</i>
<b>1998-99</b>	113.5	1 816.1	101.8	12.6	12.5	382.3
<b>1999-2000</b>	104.3	2 068.3	98.7	7.9	14.8	311.9
<b>2000-01</b>	105.4	2 027.3	40.6	—	14.8	r 143.2
<b>2000</b>						
March	26.2	517.7	22.4	1.4	3.3	70.4
June	23.8	502.9	19.8	1.3	3.6	60.4
September	21.6	544.2	7.7	—	3.2	26.8
December	24.9	500.7	9.7	—	3.4	33.5
<b>2001</b>						
March	29.3	534.9	12.1	—	3.9	43.2
June	29.5	447.5	11.2	—	4.3	39.5
September	32.5	487.8	8.9	—	3.1	35.2
December	30.9	554.1	8.4	—	3.6	37.9
<b>2002</b>						
March	27.9	533.5	9.9	—	2.7	33.3

Source: Mineral Resources Tasmania, Department of Infrastructure, Energy and Resources.

	Tasmanian-grown logs delivered					Sawn, peeled and sliced timber produced(a)				
	Eucalypts	Hardwoods, excluding eucalypts(b)	Plant- ation(c)	Native soft- woods(d)	Total	Eucalypts	Hardwoods, excluding eucalypts(b)	Plant- ation(c)	Native soft- woods(d)	Total
		'000 m <sup>3</sup>	'000 m <sup>3</sup>	'000 m <sup>3</sup>			'000 m <sup>3</sup>	'000 m <sup>3</sup>	'000 m <sup>3</sup>	
<b>1998-99</b>	499.9	22.6	351.9	1.0	875.4	159.7	5.1	169.7	0.3	334.8
<b>1999-2000</b>	510.1	28.8	396.2	0.9	936.9	169.7	5.3	190.6	0.4	366.0
<b>2000-01</b>	468.5	24.8	369.9	2.6	865.8	157.9	6.3	174.1	0.2	338.6
<b>2000</b>										
March	104.3	10.0	100.7	0.4	215.3	37.8	1.3	47.8	0.1	87.0
June	137.3	7.3	98.2	0.2	243.1	39.8	1.3	47.3	0.1	88.3
September	130.7	5.0	103.8	0.3	239.9	42.4	1.7	46.6	0.1	90.9
December	118.1	4.3	82.7	0.2	205.2	41.6	1.3	41.4	—	84.3
<b>2001</b>										
March	105.3	6.7	91.9	1.8	205.6	37.2	1.5	42.4	0.1	81.2
June	116.3	8.8	91.5	0.2	216.9	37.4	1.8	43.6	—	82.9
September	129.8	5.6	115.9	0.1	251.4	42.1	1.8	50.9	0.1	95.0
December	115.0	8.9	94.3	0.1	218.4	37.8	2.2	48.4	0.1	88.3
<b>2002</b>										
March	116.2	10.3	121.6	0.3	248.5	41.6	2.7	53.6	0.1	97.9

(a) Includes plywood, veneer and sliced timber production converted to an equivalent cubic measurement.

(b) Includes blackwood, myrtle, sassafras etc.

(c) Radiata pine.

(d) Includes Huon pine, Celery Top pine and King William pine.

Source: Data available on request, Forest Products Survey.

## 25

### CHIPPING AND GRINDING OF WOOD(a)(b)

	Producing locations(d)	Materials used(c)			Chipped and ground wood production '000 tonnes green weight
		no.	Logs delivered(e) '000 m <sup>3</sup>	Sawmill offcuts '000 m <sup>3</sup>	
<b>1998-99</b>	29	3 459.6	373.4	3 929.9	
<b>1999-2000</b>	30	4 526.8	452.5	5 145.3	
<b>2000-01</b>	29	n.p.	n.p.	n.p.	
<b>2000</b>					
March	30	1 152.1	104.6	1 308.7	
June	30	1 214.1	117.4	1 404.0	
September	31	1 259.5	104.0	1 451.7	
December	30	1 328.2	120.3	1 420.6	
<b>2001</b>					
March	30	1 177.9	89.4	1 236.4	
June(f)	29	n.p.	n.p.	n.p.	
September	28	n.p.	n.p.	n.p.	
December	29	n.p.	n.p.	n.p.	
<b>2002</b>					
March	29	n.p.	n.p.	n.p.	

(a) Both hardwoods and softwoods, separate details are not available.

(b) With recent acquisitions, resulting in increased concentration of ownership in the woodchip industry, production data collected by the ABS are no longer releasable.

(c) Data reported by weight, converted to cubic measure by the factor of 0.95 m<sup>3</sup> per tonne.

(d) Capable of producing at end of year or actually producing during quarter.

(e) Includes log equivalent of limbwood and billets.

(f) From June 2001 onwards, due to confidentiality requirements, no data may be published relating to logs delivered for chipping and grinding, nor sawmill offcuts nor data on chipped and ground wood production.

Source: Data available on request, Forest Products Survey.

## 26

### LOGS DELIVERED FOR MILLING OR CHIPPING

	Sawmilling and plywood milling			Chipping and grinding(a)(b)			Total		
	Crown land(c)	Private land	Total	Crown land(c)	Private land	Total	Crown land(c)	Private land	Total
	'000 m <sup>3</sup>	'000 m <sup>3</sup>	'000 m <sup>3</sup>	'000 m <sup>3</sup>	'000 m <sup>3</sup>	'000 m <sup>3</sup>	'000 m <sup>3</sup>	'000 m <sup>3</sup>	'000 m <sup>3</sup>
<b>1998-99</b>	754.2	121.2	875.4	1 562.6	1 897.0	3 459.6	2 316.7	2 018.2	4 334.9
<b>1999-2000</b>	834.4	101.6	935.9	2 440.5	2 086.3	4 526.8	3 274.9	2 187.8	5 462.7
<b>2000-01</b>	770.6	95.2	865.8	n.p.	n.p.	n.p.	n.p.	n.p.	n.p.
<b>2000</b>									
March	192.1	23.2	215.3	585.3	566.9	1 152.1	777.3	590.1	1 367.4
June	218.0	25.1	243.1	658.1	555.9	1 214.1	876.1	581.0	1 457.1
September	219.7	20.2	239.9	729.7	529.8	1 259.5	949.4	550.1	1 499.4
December	184.3	20.9	205.2	779.7	548.5	1 328.2	964.0	569.5	1 533.5
<b>2001</b>									
March	181.1	24.5	205.6	651.7	526.3	1 177.9	832.8	550.8	1 383.6
June	188.4	28.5	216.9	n.p.	n.p.	n.p.	n.p.	n.p.	n.p.
September	227.6	23.8	251.4	n.p.	n.p.	n.p.	n.p.	n.p.	n.p.
December	200.7	17.9	218.6	n.p.	n.p.	n.p.	n.p.	n.p.	n.p.
<b>2002</b>									
March	224.7	23.7	248.5	n.p.	n.p.	n.p.	n.p.	n.p.	n.p.

(a) Logs used are generally below sawmilling standard: includes log equivalent of limbwood and billets.

(b) With recent acquisitions, resulting in increased concentration of ownership in the woodchip industry, production data collected by the ABS are no longer releasable.

(c) Comprises all areas (including concession areas) from which royalties are payable to Forestry Tasmania.

Source: Data available on request, ABS Forest Products Survey.

Value(e)

	Dwelling units				Non-residential buildings(d)			Total of all building	
	New houses	New other residential buildings(a)	Other dwelling units created (conversions etc.)(b)	Total dwelling units	New dwelling units	Alterations and additions to residential buildings(c)	Private		Total
	no.	no.	no.	no.	\$m	\$m	\$m		\$m
<b>1997-98</b>	1419	219	5	1643	142.4	38.4	82.7	125.5	306.3
<b>1998-99</b>	1297	104	9	1410	131.2	36.8	115.8	174.5	342.6
<b>1999-00</b>	1608	230	55	1893	193.4	50.7	120.7	160.6	404.7
<b>2000-01</b>	1108	80	11	1199	127.5	43.1	95.2	152.5	323.0
<b>2001</b>									
May	133	—	1	134	14.2	4.7	12.4	26.7	45.6
June	119	7	1	127	14.1	3.6	6.1	6.8	24.5
July	113	4	1	118	12.6	3.9	9.6	9.9	26.4
August	143	4	2	149	15.8	5.3	10.0	11.3	32.4
September	145	45	—	190	22.0	5.4	9.4	10.7	38.1
October	165	4	1	170	18.1	4.4	24.3	29.0	51.4
November	169	—	1	170	18.6	5.3	7.5	12.0	35.9
December	156	2	2	160	15.9	3.3	6.4	27.4	46.6
<b>2002</b>									
January	223	60	1	284	30.2	3.7	6.1	8.2	42.0
February	140	8	3	151	16.0	4.0	8.5	11.8	31.8
March	166	1	—	167	19.6	4.6	8.3	13.2	37.4
April	153	12	—	165	17.3	3.3	4.1	7.0	27.5
May	161	4	—	165	19.8	4.6	11.3	11.6	36.0

(a) New individual dwelling units (e.g. flats, home units and villa units).

(b) From alterations and additions to residential building, conversions of non-residential building to residential building etc.

(c) Valued at \$10,000 and over. Includes conversions and dwelling units approved as part of alterations and additions or as part of the construction of non-residential building.

(d) Comprises non-residential building (new plus alterations and additions) valued at \$50,000 and over.

(e) Value data from July 2000 reference month onward are recorded inclusive of GST. See cat. no. 8731.0 or page 2 of this publication for more details.

Source: *Building Approvals, Australia* (cat. no. 8731.0).

	Total number of dwellings(a)			Total value of commitments(b)		
	Original	Seasonally adjusted	Trend	Original	Seasonally adjusted	Trend
	no.	no.	no.	\$m	\$m	\$m
<b>2001</b>						
May	1 132	983	978	89	79	77
June	963	1 004	974	79	86	79
July	875	938	973	70	68	81
August	1 097	989	982	91	86	82
September	911	990	1 011	79	87	85
October	1 070	1 002	1 059	91	87	89
November	1 181	1 131	1 106	99	94	93
December	1 080	1 164	1 136	89	88	96
<b>2002</b>						
January	1 080	1 253	1 143	93	113	97
February	1 078	1 087	1 130	94	97	97
March	1 091	1 108	1 109	93	92	96
April	1 005	980	1 088	87	87	94
May	1 303	1 128	1 065	108	97	93

(a) Includes new dwellings, established dwellings and refinancing. Excludes alterations and additions.

(b) Commitment is a firm offer of housing finance. It either has been, or is normally expected to be, accepted. Includes commitments to provide housing finance to employees and commitments accepted and cancelled in the same month. Excludes alterations and additions. Includes refinancing.

Source: *Housing Finance for Owner Occupation, Australia (cat. no. 5609.0)*.

	Asset			Industry			
	Buildings and structures	Equipment, plant and machinery	Total asset	Mining	Manufacturing	Other selected industries	Total all industries
	\$m	\$m	\$m	\$m	\$m	\$m	\$m
<b>1998–99</b>	130	345	475	48	144	283	475
<b>1999–2000</b>	70	385	456	53	128	275	456
<b>2000–01</b>	91	425	516	85	152	279	516
<b>2000</b>							
March	14	74	88	14	25	49	88
June	28	130	157	20	36	101	157
September	30	100	130	35	35	61	130
December	24	117	141	15	40	86	141
<b>2001</b>							
March	21	84	105	11	30	64	105
June	16	124	140	24	47	68	140
September	54	109	163	14	37	111	163
December	88	93	181	11	38	132	181
<b>2002</b>							
March	121	108	229	16	33	180	229

(a) Estimates based on a sample survey and therefore subject to sampling variability. Covers selected industries only — mining, manufacturing, finance, property and other selected industries.

(b) Current prices.

(c) See cat. no. 5625.0 or page 2 of this issue on the impacts of The New Tax System (TNTS) introduced on 1 July 2000.

Source: *Private New Capital Expenditure, State Estimates (cat. no. 5646.0)*.

	<i>Deposits</i>				
	<i>Current bearing interest</i>	<i>Current not bearing interest</i>	<i>Term</i>	<i>Investment savings accounts</i>	<i>Statement savings accounts</i>
	<i>\$m</i>	<i>\$m</i>	<i>\$m</i>	<i>\$m</i>	<i>\$m</i>
<b>2001</b>					
March	1 332	295	1 243	279	251
April	1 338	296	1 132	281	255
May	1 322	287	1 214	283	266
June	1 382	289	1 106	292	275
July	1 372	283	1 267	294	284
August	1 376	260	1 228	293	293
September	1 409	260	1 235	295	302
October	1 427	269	1 235	298	311
November	1 437	274	1 193	302	310
December	1 494	299	1 241	302	320
<b>2002</b>					
January	1 504	292	1 236	303	322
February	1 530	300	1 242	303	325
March	1 557	305	1 309	303	332

	<i>Deposits</i>			<i>Loans(b)</i>
	<i>Passbook/school savings accounts</i>	<i>Other</i>	<i>Total</i>	
	<i>\$m</i>	<i>\$m</i>	<i>\$m</i>	
<b>2001</b>				
March	39	98	3 536	5 232
April	39	92	3 433	5 228
May	39	94	3 505	5 427
June	40	105	3 489	5 327
July	40	101	3 641	5 375
August	40	102	3 592	5 415
September	40	104	3 645	5 387
October	41	106	3 687	5 451
November	41	107	3 664	5 470
December	41	106	3 803	5 482
<b>2002</b>				
January	42	105	3 804	5 512
February	42	115	3 857	5 556
March	42	110	3 958	5 540

(a) Details are the averages of weekly figures for each month. The figures are derived from returns submitted by banks authorised under the Banking Act together with similar returns voluntarily submitted by the State banks; they exclude the Reserve Bank.

(b) Excludes non-resident loans.

Source: Reserve Bank of Australia.

## ACCOMMODATION ESTABLISHMENTS(a)

	<i>Establish- ments</i>	<i>Guest rooms</i>	<i>Bed spaces</i>	<i>Persons employed</i>	<i>Room nights occupied</i>	<i>Room occupancy rate</i>	<i>Guest nights</i>	<i>Bed occupancy rate</i>	<i>Guest arrivals</i>	<i>Takings from accommodation(b)</i>
	<i>no.</i>	<i>no.</i>	<i>no.</i>	<i>no.</i>	<i>'000</i>	<i>%</i>	<i>'000</i>	<i>%</i>	<i>'000</i>	<i>\$'000</i>
<b>LICENSED HOTELS WITH FACILITIES</b>										
<b>2001</b>										
March qtr	54	2 915	7 999	2 822	174.3	66.4	292.1	40.6	170.1	17 081
<b>2002</b>										
January	n.a.	n.a.	n.a.	n.a.	51.6	57.5	93.5	38.0	50.9	4 957
February	n.a.	n.a.	n.a.	n.a.	54.2	66.7	89.9	40.4	50.4	5 115
March	n.a.	n.a.	n.a.	n.a.	61.1	68.0	102.6	41.7	57.1	5 673
March qtr	53	2 899	7 945	2 700	169.9	64.0	286.0	40.0	158.4	15 745
<b>MOTELS AND GUEST HOUSES WITH FACILITIES</b>										
<b>2001</b>										
March qtr	49	1 667	5 163	721	102.4	68.2	202.1	43.5	109.5	9 553
<b>2002</b>										
January	n.a.	n.a.	n.a.	n.a.	32.0	62.5	68.6	43.2	35.8	3 086
February	n.a.	n.a.	n.a.	n.a.	31.8	68.8	61.1	42.6	33.2	2 887
March	n.a.	n.a.	n.a.	n.a.	35.4	69.3	70.2	44.2	38.7	3 243
March qtr	49	1 650	5 124	695	99.2	66.8	199.9	43.3	107.7	9 216
<b>SERVICED APARTMENTS</b>										
<b>2001</b>										
March qtr	25	880	3 224	437	58.4	73.8	133.9	46.2	58.6	7 088
<b>2002</b>										
January	n.a.	n.a.	n.a.	n.a.	20.6	65.7	53.9	51.1	21.7	2 580
February	n.a.	n.a.	n.a.	n.a.	19.3	68.2	41.1	43.1	17.9	2 201
March	n.a.	n.a.	n.a.	n.a.	22.8	73.0	49.5	46.9	21.5	2 682
March qtr	26	1 009	3 407	531	62.7	69.0	144.5	47.1	61.1	7 463
<b>TOTAL ESTABLISHMENTS</b>										
<b>2001</b>										
March qtr	128	5 462	16 386	3 980	335.1	68.2	628.2	42.6	338.1	33 722
<b>2002</b>										
January	n.a.	n.a.	n.a.	n.a.	104.2	60.5	216.0	42.3	108.5	10 623
February	n.a.	n.a.	n.a.	n.a.	105.2	67.6	192.0	41.6	101.5	10 203
March	n.a.	n.a.	n.a.	n.a.	119.4	69.3	222.4	43.5	117.4	11 598
March qtr	128	5 558	16 476	3 926	328.8	65.7	630.4	42.5	327.3	32 424

(a) Comprising establishments with 15 or more rooms or units. For explanation of terms and concepts refer to *Tourist Accommodation, Australia* (cat. no. 8635.0).

(b) 'Takings from accommodation' after 1 July 2000 are recorded inclusive of GST. See cat. no. 8635.0 or page 2 of this publication for more details.

Source: *Tourist Accommodation, Australia* (cat. no. 8635.0). For more detailed information, see *Tourist Accommodation, Small Area Data, Tasmania* (cat. no. 8635.6.40.001).



## 32

## NATIONAL PARKS, PERSON ENTRIES(a)

## Tasmanian National Park attendance

	<i>Cradle Mountain(b)</i> <i>(Lake Dove)</i>	<i>Lake St Clair(b)</i> <i>(Cynthia Bay)</i>	<i>Freycinet(b)</i>	<i>Mt Field(b)</i>	<i>Narawntapu(c)</i> <i>(Bakers Beach)</i>	<i>Mole Creek Karst(d)</i> <i>(Marakoopa Cave)</i>	<i>Maria Island(e)</i> <i>(Darlington)</i>
	<i>no.</i>	<i>no.</i>	<i>no.</i>	<i>no.</i>	<i>no.</i>	<i>no.</i>	<i>no.</i>
<b>2001-02</b>	198 500	107 800	p 274 000	133 900	35 800	26 103	12 275
<b>2001</b>							
June	7 200	3 300	9 300	5 600	1 400	1 394	477
July	8 700	3 000	8 500	5 500	1 600	948	96
August	5 000	2 200	8 900	7 000	1 000	1 132	280
September	10 300	5 200	12 800	6 900	1 900	2 324	843
October	12 700	7 700	20 800	8 600	r 2 700	2 151	870
November	16 500	8 700	23 400	9 800	3 400	2 041	946
December	22 400	10 900	34 700	15 200	r 4 200	3 647	1 367
<b>2002</b>							
January	35 200	19 200	49 000	24 100	r 6 700	4 458	2 104
February	24 400	14 200	35 300	15 900	r 4 000	2 235	1 782
March	24 700	16 400	34 400	15 700	5 000	2 444	2 025
April	22 100	12 100	24 700	12 900	r 2 500	2 380	1 222
May	7 300	5 000	12 500	6 800	r 1 300	998	616
June	7 100	3 400	p 8 800	4 700	1 500	1 345	451

(a) A 'person entry' occurs whenever a visitor enters a National Park. Freycinet data, in particular, reflects repeat entries. Measurement occurs at the designated sites in brackets.

(b) Estimated through a combination of traffic and booth counts.

(c) Estimated through traffic counts.

(d) Number of people taken on a guided tour.

(e) The sum of ferry arrivals only. From July 2000, excludes estimated plane passengers.

Source: Tasmanian Parks and Wildlife Service, Department of Primary Industries, Water and Environment.

## 33

## TRACKS IN NATIONAL PARKS, WALKER REGISTRATIONS(a)

	<i>Overland(b)</i>	<i>South Coast(c)</i>	<i>Freycinet(d)</i>	<i>Port Davey(c)</i>	<i>Frenchmans Cap</i>
	<i>no.</i>	<i>no.</i>	<i>no.</i>	<i>no.</i>	<i>no.</i>
<b>2001-02</b>	p 7 482	n.y.a	3 512	n.y.a	685
<b>2001</b>					
June	141	2	96	1	7
July	94	2	81	2	7
August	39	3	78	3	10
September	124	4	164	3	16
October	218	22	256	2	23
November	731	71	353	40	25
December	1 288	231	236	29	122
<b>2002</b>					
January	1 358	324	807	53	129
February	r 1 341	p 193	359	62	101
March	r 1 319	rp 145	446	r 18	101
April	p 726	rp 53	273	11	109
May	p 175	p 5	307	r 1	22
June	p 69	n.y.a	152	n.y.a	20

(a) Numbers include only walkers who registered and represented their intention.

(b) Sum of registrations at Cradle Mt and Lake St Clair.

(c) Sum of registrations to walk the length of the track in any direction, irrespective of starting point.

(d) All overnight walkers registered in the park.

Source: Tasmanian Parks and Wildlife Service, Department of Primary Industries, Water and Environment.

	Passenger vehicles	Other vehicles	Total	Change from corresponding month of previous year
	no.	no.	no.	%
ORIGINAL				
<b>1999–2000</b>	9 236	4 708	13 944	..
<b>2000–01</b>	9 944	4 693	14 637	..
<b>2001–02</b>	9 467	5 295	14 762	..
<b>2001</b>				
June	711	465	1 176	12.6
July	696	376	1 072	-8.7
August	785	392	1 177	-13.6
September	720	324	1 044	-19.3
October	851	406	1 257	6.6
November	951	476	1 427	11.5
December	1 424	449	1 873	-2.7
<b>2002</b>				
January	645	344	989	3.7
February	677	413	1 090	3.1
March	636	457	1 093	-7.8
April	672	431	1 103	20.7
May	737	606	1 343	18.0
June	673	621	1 294	10.0
TREND				
<b>1999–2000</b>	9 227	4 720	13 947	..
<b>2000–01</b>	9 803	4 694	14 497	..
<b>2001–02</b>	9 564	5 278	14 842	..
<b>2001</b>				
June	727	372	1 099	-2.7
July	714	375	1 089	-5.9
August	722	385	1 107	-6.8
September	753	401	1 154	-5.3
October	795	419	1 214	-2.7
November	832	435	1 267	—
December	854	448	1 302	2.4
<b>2002</b>				
January	855	455	1 310	3.5
February	840	458	1 298	3.8
March	820	462	1 282	5.1
April	804	469	1 273	8.1
May	792	479	1 271	12.3
June	783	492	1 275	16.0

(a) This table is new and replaces the Registration of New Motor Vehicles table. The Australian Bureau of Statistics is no longer collecting and disseminating statistics relating to the registration of new motor vehicles. For more information please refer to the paper: *Developments in New Motor Vehicle Statistics, 2001* (cat. no. 9313.0).

Source: *Sales of New Motor Vehicles* (cat. no. 9314.0).

								<i>Trend</i>	
								<i>Total(d)</i>	
	Original	Food retailing	Clothing and soft good retailing	Household good retailing	Recreational good retailing	Hospitality and services		Change from corresponding month of previous year	
	\$m	\$m	\$m	\$m	\$m	\$m	\$m	%	
<b>1998-99</b>	3170.1	1352.1	185.1	337.2	200.3	434.3	3175.0	—	
<b>1999-2000</b>	3278.5	1397.8	163.3	366.1	211.0	475.0	3253.9	2.5	
<b>2000-01</b>	3405.8	1480.5	172.9	409.3	211.6	483.1	3412.9	4.9	
<b>2001</b>									
May	286.0	127.7	15.5	34.8	17.6	41.9	291.5	8.9	
June	276.5	127.9	15.6	34.2	17.9	41.8	290.6	8.3	
July	268.9	127.7	15.7	33.8	18.1	41.5	289.7	6.0	
August	279.2	127.1	15.9	33.7	18.4	41.0	289.5	5.3	
September	272.0	126.6	16.3	34.0	18.6	40.5	290.4	4.9	
October	290.5	126.3	16.8	34.4	18.9	40.1	292.4	4.7	
November	310.7	126.3	17.4	35.0	19.1	39.8	294.9	4.7	
December	378.8	126.9	17.9	35.7	19.3	39.3	297.5	4.6	
<b>2002</b>									
January	304.3	127.8	18.1	36.4	19.5	38.9	300.1	4.4	
February	277.1	129.0	18.3	37.0	19.7	38.5	302.6	4.4	
March	308.5	130.2	18.5	37.6	19.8	38.2	305.0	4.7	
April	294.3	131.3	18.6	38.1	19.8	38.1	307.3	5.3	
May	309.9	132.2	18.7	38.5	19.8	38.0	309.4	6.1	

(a) Excludes motor vehicles, parts, petrol, etc.

(b) ABS retail seasonally adjusted and trend estimates for earlier periods are revised each month. See cat. no. 8501.0 for more details.

(c) Data from July 2000 reference month onwards are recorded inclusive of GST. See cat. no. 8501.0 and page 2 of this publication for more details.

A break in the trend series occurred between June and July 2000 because of the impact of The New Tax System on retail turnover.

(d) Includes Department stores and Other retailing.

Source: Retail Trade, Australia (cat. no. 8501.0).

	Tasmania				Australia				
	Imports	Imports change over preceding period		Exports	Exports change over preceding period		Imports	Imports change over preceding period	
		\$m	%		\$m	%		\$m	%
<b>1998-99</b>	407	6	2 019	-5	97 611	8	85 991	-2	
<b>1999-2000</b>	440	8	2 215	10	110 078	13	97 286	13	
<b>2000-01</b>	524	19	2 435	10	118 317	7	119 539	23	
<b>2001</b>									
May	51	82	222	5	9 979	4	10 696	4	
June	34	-33	205	-8	9 510	-5	10 621	-1	
July	36	7	200	-2	9 718	2	10 584	—	
August	46	27	190	-5	10 613	9	10 493	-1	
September	37	-20	170	-10	9 693	-9	10 605	1	
October	44	21	202	19	11 519	19	10 794	2	
November	52	17	185	-9	r 10 482	-9	10 122	-6	
December	50	-3	190	3	9 138	-13	r 10 191	1	
<b>2002</b>									
January	r 69	r 38	177	-7	r 9 351	2	r 8 970	-12	
February	42	r -39	147	-17	r 9 618	3	r 9 310	4	
March	29	-32	257	75	r 9 619	—	r 10 498	13	
April	32	r 11	r 275	r 7	r 10 145	5	r 9 790	-7	
May	47	48	194	-29	10 163	—	10 045	3	

(a) It is difficult to get a complete picture of Tasmania's trade performance as imports recorded by the ABS include only goods imported directly into the State from overseas, and reported by the Australian Customs Service. Many of Tasmania's goods imported for direct consumption, or input into further processing industries, arrive via interstate ports, and are not included in this table.

(b) Includes re-exports.

Source: Data available on request, International Trade.

	European Community					East Asia			Total all countries
	United States of America	United Kingdom	Total European Community	Japan	Korea	Taiwan	Hong Kong	ASEAN(a)	
	\$'000	\$'000	\$'000	\$'000	\$'000	\$'000	\$'000	\$'000	
<b>1998-99</b>	235 787	28 691	278 037	466 626	101 177	150 071	152 533	353 441	2 019 182
<b>1999-2000</b>	202 831	19 228	309 082	489 037	133 553	207 233	201 348	383 690	2 214 523
<b>2000-01</b>	229 841	37 169	154 043	573 314	183 972	214 042	252 793	390 642	2 435 416
<b>2001</b>									
May	28 945	3 672	8 194	44 978	14 532	25 388	23 868	35 553	222 421
June	22 157	2 247	10 659	77 937	18 071	11 386	14 221	20 044	205 284
July	38 008	3 579	6 536	40 356	8 414	12 956	21 324	34 025	200 266
August	25 959	3 107	9 253	52 300	12 354	15 035	24 080	31 533	190 330
September	19 735	303	10 075	36 565	13 186	11 584	20 535	29 418	170 447
October	24 307	420	4 445	60 304	20 206	14 927	15 957	30 841	202 475
November	24 659	6 257	13 630	44 470	11 887	10 851	27 104	r 23 947	r 184 916
December	37 009	2 177	7 653	41 625	6 856	12 471	24 656	r 30 445	r 190 126
<b>2002</b>									
January	11 023	1 271	4 413	43 055	r 30 603	11 739	r 19 866	r 29 429	r 177 459
February	9 354	4 668	r 16 701	47 267	8 385	5 908	r 16 906	r 20 826	r 146 820
March	41 669	r 1 817	r 16 171	r 48 870	49 124	r 12 688	r 23 882	r 30 194	r 256 712
April	r 14 859	r 5 464	r 20 553	r 34 798	r 28 428	r 16 283	r 18 202	r 37 469	r 275 466
May	25 263	2 676	11 082	46 120	13 575	9 823	26 909	23 841	194 412

(a) ASEAN member countries are: Brunei, Cambodia, Indonesia, Laos, Malaysia, Myanmar, Philippines, Singapore, Thailand and Vietnam.

Source: Data available on request, International Trade.

	<i>Meat and meat preparations</i>	<i>Dairy product &amp; eggs</i>	<i>Fish, crustaceans and molluscs</i>	<i>Vegetables and fruit</i>	<i>Wood and woodchips(a)</i>	<i>Textile fibres and wastes</i>	<i>Metallic ores and metal scrap</i>
	\$'000	\$'000	\$'000	\$'000	\$'000	\$'000	\$'000
<b>1998-99</b>	65 026	102 709	136 268	54 907	296 164	24 999	278 001
<b>1999-2000</b>	88 298	64 573	145 484	44 689	303 340	22 358	242 584
<b>2000-01</b>	88 773	101 006	176 737	49 788	31 816	21 248	242 366
<b>2001</b>							
May	9 299	8 684	11 835	8 761	2 450	131	25 216
June	8 240	7 336	10 439	3 562	1 877	131	32 769
July	8 153	10 429	13 218	3 150	3 177	977	17 881
August	6 753	11 563	21 281	3 229	2 416	935	9 128
September	5 598	5 918	14 068	759	2 327	1 166	11 303
October	7 229	6 504	13 007	1 595	2 930	951	20 125
November	6 389	8 821	17 589	1 090	2 899	2 010	r 19 535
December	6 168	6 903	23 199	1 317	6 032	1 905	r 10 875
<b>2002</b>							
January	6 253	8 033	r 15 478	1 646	1 896	1 203	r 23 215
February	6 782	11 100	r 16 258	r 4 424	4 077	r 4 394	r 6 258
March	r 6 492	10 878	r 12 725	r 10 022	r 4 159	6 619	17 295
April	r 4 232	r 9 450	r 12 746	r 15 926	r 3 525	1 030	r 14 163
May	4 972	9 645	8 451	9 535	6 802	633	20 623

	<i>Paper and paperboard</i>	<i>Iron and steel</i>	<i>Non-ferrous metals</i>	<i>Road vehicles and transport equipment</i>	<i>Other and combined confidential items(b)</i>	<i>Total all commodity groups</i>
	\$'000	\$'000	\$'000	\$'000	\$'000	\$'000
<b>1998-99</b>	4 130	95 265	544 311	173 015	244 387	2 019 182
<b>1999-2000</b>	9 932	10 216	681 903	213 836	387 310	2 214 523
<b>2000-01</b>	3 444	4 209	793 286	107 374	815 368	2 435 416
<b>2001</b>						
May	89	338	78 422	701	76 495	222 421
June	393	273	55 548	2 248	82 467	205 284
July	110	338	77 267	90	65 477	200 266
August	364	182	73 535	1 563	59 380	190 330
September	223	570	65 584	653	62 279	170 447
October	784	227	59 151	1 882	88 091	202 475
November	159	451	52 170	354	73 447	r 184 916
December	1 823	203	48 803	479	82 421	r 190 126
<b>2002</b>						
January	2 188	255	r 65 173	659	51 462	r 177 459
February	2 076	67	32 634	304	58 446	r 146 820
March	3 195	106	r 88 446	r 19 692	r 77 082	r 256 712
April	r 1 454	162	r 69 143	r 79 581	r 64 054	r 275 466
May	635	88	60 220	320	72 487	194 412

(a) Hardwood woodchips exports are confidential for Tasmania from June 2000.

(b) Includes medical & pharmaceutical products from January 2002.

Source: Data available on request, International Trade.

	NSW	Vic.	Qld	SA	WA	Tas.	Aust.(a)
<b>Population</b>							
Estimated resident population, December 2001 ('000) p	6 642.9	4 854.1	3 670.5	1 518.9	1 918.8	<b>473.3</b>	19 603.5
Proportion of Australian population, December 2001 (%) p	33.9	24.8	18.7	7.7	9.8	<b>2.4</b>	100.0
Population growth rate, 12 months to December 2001 (%) p	1.1	1.3	1.9	0.5	1.3	<b>0.2</b>	1.3
<b>Labour force</b>							
Employment growth, 12 months to June 2002 (trend series)(%)							
Males	1.3	1.2	4.0	2.9	2.8	<b>-1.4</b>	2.0
Females	0.4	2.3	1.1	3.2	1.5	<b>1.3</b>	1.3
Persons	0.9	1.7	2.7	3.0	2.3	<b>-0.2</b>	1.7
Unemployment rate (trend series), June 2002 (%)	6.1	5.8	7.4	6.7	6.0	<b>8.3</b>	6.3
Unemployment growth, 12 months to June 2002 (trend series) (%)	4.4	-6.1	-11.7	-8.6	-17.8	<b>-6.7</b>	-7.0
Participation rate (trend series), June 2002 (%)	62.6	63.6	64.9	61.1	66.5	<b>57.8</b>	63.6
Job vacancy rate, May 2002 (%)	1.2	1.3	0.7	1.3	*1.2	<b>*0.8</b>	1.2
Working days lost through industrial disputes, 12 months to April 2002 (days per 1 000 employees)	59	66	30	31	31	<b>17</b>	48
<b>Wages and prices</b>							
Average weekly full-time adult employees' total earnings (trend series) February 2002(\$)							
Males	1 017.90	947.70	895.00	894.00	981.80	<b>863.10</b>	961.30
Females	814.10	790.20	733.60	753.20	744.60	<b>731.80</b>	782.60
Persons	941.60	894.00	835.40	848.80	897.20	<b>816.10</b>	897.30
Average weekly full-time adult employees' total earnings, growth (trend), 12 months to Feb 2002 (%)	5.8	8.4	4.9	4.5	3.8	<b>5.6</b>	5.8
Consumer price index, all groups, annual growth to March qtr 2002 (%) (b)	6.5	6.0	5.7	5.8	5.3	<b>5.4</b>	6.0
<b>Building</b>							
% change in the number of total dwelling units approved (original), in the 12 months ended May 2002,							
— over the same period previous year	43.9	37.6	42.4	62.9	34.2	<b>73.9</b>	41.5
— May 2001 to May 2002	36.0	21.1	-1.6	38.4	10.8	<b>23.1</b>	18.9
For footnotes see end of table.							...continued

	NSW	Vic.	Qld	SA	WA	Tas.	Aust.(a)
<b>Private investment and retail trade</b>							
% change in private new capital expenditure, 12 months ended December 2001 over the same period previous year (original)	-16.2	-4.3	-12.8	-9.2	20.1	14.1	-5.1
% change in trend estimates turnover of retail establishments, May 2002 (change from corresponding month of the previous year)	5.8	8.4	6.8	12.5	11.5	<b>6.1</b>	7.8
<b>Transport</b>							
% change in number of sales of new motor vehicles in the 12 months ended June 2002 over the same period previous year, (trend)(c)	1.5	2.8	4.9	3.5	-0.4	<b>2.4</b>	2.3
<b>Agriculture</b>							
% change in the number of livestock slaughtered 12 months ended May 2002 over the							
<b>Tourism — room occupancy rates</b>							
Hotels, motels & guest houses, & serviced apartments with facilities, March quarter 2002 (%)	59.2	60.6	58.4	59.8	54.9	<b>65.7</b>	58.6
<b>Australian National and State Accounts</b>							
% change in Domestic (State) Final Demand(d), Chain Volume measures (trend series)							
Dec qtr 2001 to March qtr 2002	1.0	1.3	1.0	1.4	0.6	<b>1.7</b>	1.3
Mar qtr 2001 to Mar qtr 2002	3.7	6.0	5.0	6.0	5.9	<b>6.3</b>	5.3

(a) Australian totals include the ACT and NT, with the exception of Agriculture, which excludes both.

(b) CPI applies to State capitals.

(c) This data is new and replaces the Registration of New Motor Vehicles data. The Australian Bureau of Statistics is no longer collecting and disseminating statistics relating to the registration of new motor vehicles. For more information please refer to the paper: *Developments in New Motor Vehicle Statistics, 2001* (cat. no. 9313.0).

(d) Total of four types of expenditure: Private investment, Private consumption, Government investment, Government consumption.

	<i>Unit</i>	<i>Greater Hobart and Southern Statistical Divisions</i>	<i>Northern Statistical Division</i>	<i>Mersey-Lyell Statistical Division</i>	<i>Tasmania</i>
<b>Area(a)</b>	km <sup>2</sup>	25 616	19 980	22 523	68 121
<b>Population</b>					
Estimated resident population, 30 June 1996	no.	230 187	134 047	110 209	474 443
Estimated resident population, 30 June 2001	no.	229 256	133 106	107 910	470 272
Births 2000(b)	no.	2 728	1 552	1 394	5 692
Deaths 2000(b)	no.	1 712	1 136	850	3 711
<b>Labour force (original), June 2002</b>					
Total employed	no.	92 500	58 700	47 900	199 200
Total unemployed	no.	8 800	4 000	4 800	17 600
Unemployment rate	%	8.7	6.4	9.1	8.1
Participation rate	%	56.6	58.8	59.8	58.0
<b>Schools, 2000(c)</b>					
Government	no.	99	58	58	215
Non-government	no.	34	17	16	67
<b>Full-time equivalent School students, 2000(c)</b>					
Government					
Males	no.	15 415.8	9395.0	7 805.3	32 616.1
Females	no.	14 865.6	9 492.4	7 597.5	31 955.5
Total	no.	30 281.4	18 887.4	15 402.8	64 571.6
Non-government					
Males	no.	5 825.2	2 479.1	2 022.2	10 326.5
Females	no.	6 132.9	2 423.5	1 919.2	10 475.6
Total	no.	11 958.1	4 902.6	3 941.4	20 802.1
<b>Educational qualification, 1996 Census(d)</b>					
Bachelor degree or higher(e)	no.	17 058	7 152	3 908	28 184
Undergraduate diploma	no.	5 893	3 268	2 181	11 374
Associate diploma	no.	3 773	1 902	1 466	7 184
Skilled vocational	no.	16 255	10 040	8 841	35 238
Basic vocational	no.	4 548	2 632	2 305	9 515
<b>Agriculture</b>					
Establishments with agricultural activity, 1999–2000 season	no.	1 123	1 597	1 710	4 430
Total area of establishments	ha.	648 148	835 793	309 599	1 793 540
Crops, production, 1999–2000 season					
Potatoes	tonnes	4 197	103 197	159 778	267 172
Onions	tonnes	—	18 350	44 365	62 716
Apples	tonnes	44 900	4 592	8 044	57 537
Barley	tonnes	5 443	15 362	1 376	22 181
Livestock, 1999–2000 season					
Meat cattle	no.	49 738	162 071	198 800	410 610
Milk cattle	no.	5 053	80 396	120 552	206 000
Sheep and lambs	no.	1 351 885	1 807 545	181 248	3 340 678
Pigs	no.	1 761	11 360	4 427	17 548
Gross value of agricultural production, 1999–2000	\$m	146	258	287	691

For footnotes see end of table.

...continued



	<i>Unit</i>	<i>Greater Hobart and Southern Statistical Divisions</i>	<i>Northern Statistical Division</i>	<i>Mersey-Lyell Statistical Division</i>	<i>Tasmania</i>
<b>Building, 2000–2001</b>					
Total dwelling units approved	no.	632	346	218	1 196
Value of total residential building approved	\$'000	91 130	47 635	31 978	170 742
Value of total building approved	\$'000	173 164	93 717	56 423	323 304
<b>Dwellings, Census 1996</b>					
Total dwellings	no.	98 815	57 467	45 529	201 820
Occupied private dwellings	no.	85 255	49 759	40 183	175 197
Fully owned	no.	34 338	21 563	18 359	74 260

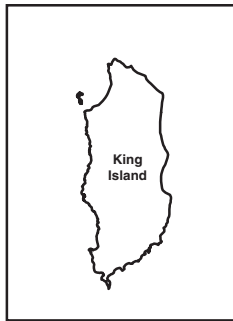
(a) Source: Department of Primary Industries, Water and Environment.

(b) Births and deaths are based on usual residence year of registration. Total Tasmania includes usual residence other than Tasmanian Statistical Divisions.

(c) Source: DETYA and Tasmanian Department of Education.

(d) Total includes migratory statistical division.

(e) Includes higher degree, postgraduate diploma and bachelor degree.



# Statistical Divisions

Statistical Division NORTHERN

Local Government Area Dorset



Based on ASGC 1996  
 Prepared by: Demography Section, ABS Hobart  
 © Commonwealth of Australia, 1998



## FOR MORE INFORMATION...

- INTERNET* **www.abs.gov.au** the ABS web site is the best place to start for access to summary data from our latest publications, information about the ABS, advice about upcoming releases, our catalogue, and Australia Now—a statistical profile.
- LIBRARY* A range of ABS publications is available from public and tertiary libraries Australia-wide. Contact your nearest library to determine whether it has the ABS statistics you require, or visit our web site for a list of libraries.
- CPI INFOLINE* For current and historical Consumer Price Index data, call 1902 981 074 (call cost 77c per minute).
- DIAL-A-STATISTIC* For the latest figures for National Accounts, Balance of Payments, Labour Force, Average Weekly Earnings, Estimated Resident Population and the Consumer Price Index call 1900 986 400 (call cost 77c per minute).

**INFORMATION SERVICE**

Data which have been published and can be provided within five minutes are free of charge. Our information consultants can also help you to access the full range of ABS information—ABS user-pays services can be tailored to your needs, time frame and budget. Publications may be purchased. Specialists are on hand to help you with analytical or methodological advice.

- PHONE* **1300 135 070**
- EMAIL* **client.services@abs.gov.au**
- FAX* 1300 135 211
- POST* Client Services, ABS, GPO Box 796, Sydney 1041

## WHY NOT SUBSCRIBE?

ABS subscription services provide regular, convenient and prompt deliveries of ABS publications and products as they are released. Email delivery of monthly and quarterly publications is available.

- PHONE* 1300 366 323
- EMAIL* subscriptions@abs.gov.au
- FAX* 03 9615 7848
- POST* Subscription Services, ABS, GPO Box 2796Y, Melbourne 3001



2130360008021  
ISSN 1034-1803

RRP \$21.00